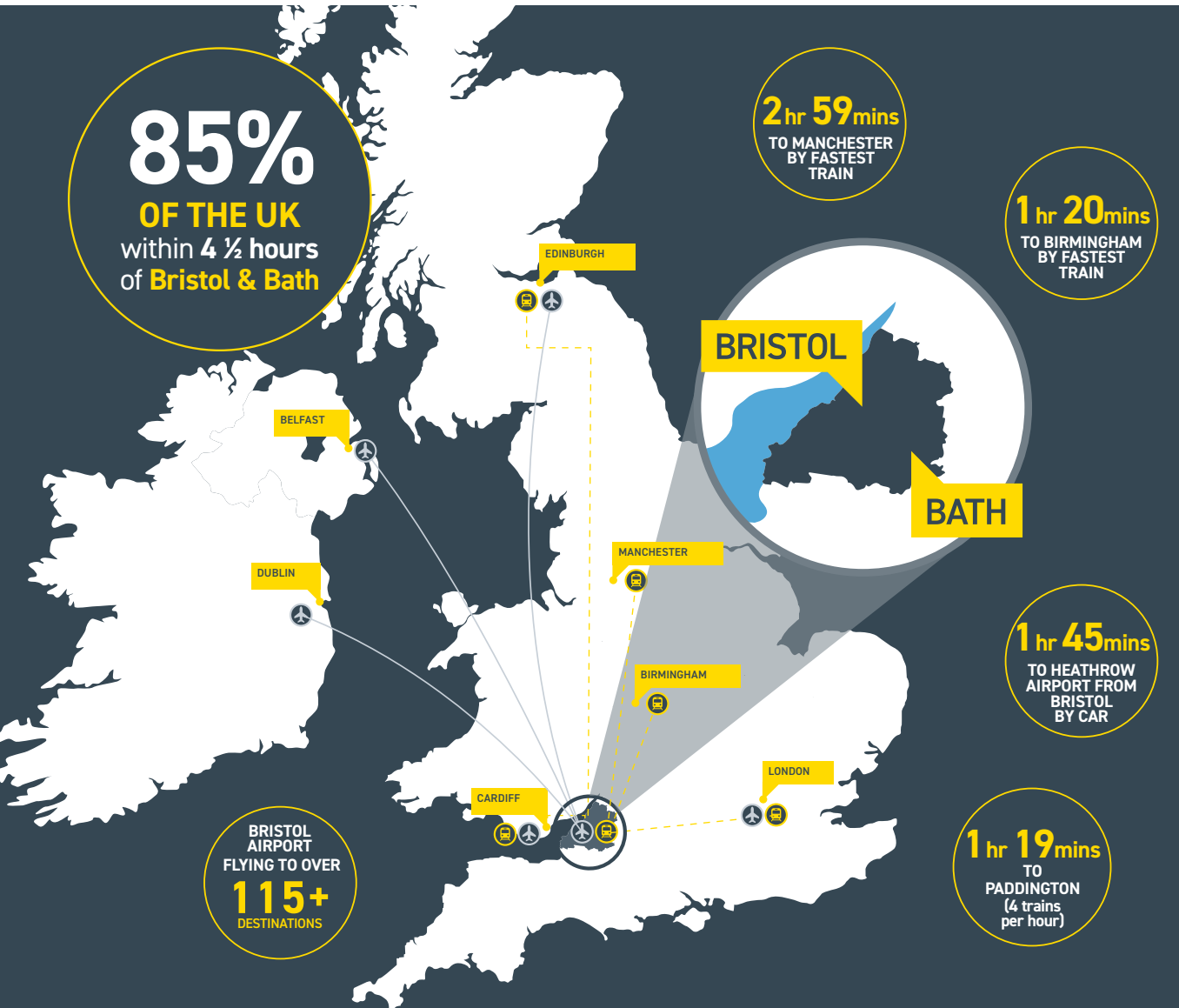


Invest
**BRISTOL
+ BATH**

LIFE SCIENCES IN THE WEST OF ENGLAND

THE WEST OF ENGLAND IN NUMBERS

Invest
**BRISTOL
+ BATH**



190+

Life Sciences
businesses
hosted in the
West of England



Most productive
city region in
England outside
London



1,1 million

Total population



4

World class
universities

90+

different languages
spoken across the
West of England



Regional
economy
worth over

£40bn



£212m

invested in Life
Science related
companies in 2022

Bristol and Bath rank
in the **top 20**
European tech hubs
for venture capital
funding

LIFE SCIENCES IN THE WEST OF ENGLAND

KEY R&D LIFE SCIENCES SUB-SECTOR GROUPINGS

- Digital Health, Medical Technology & Diagnostics
- Advanced Therapeutics & BioPharma
- Agri-Tech

Invest
**BRISTOL
+ BATH**

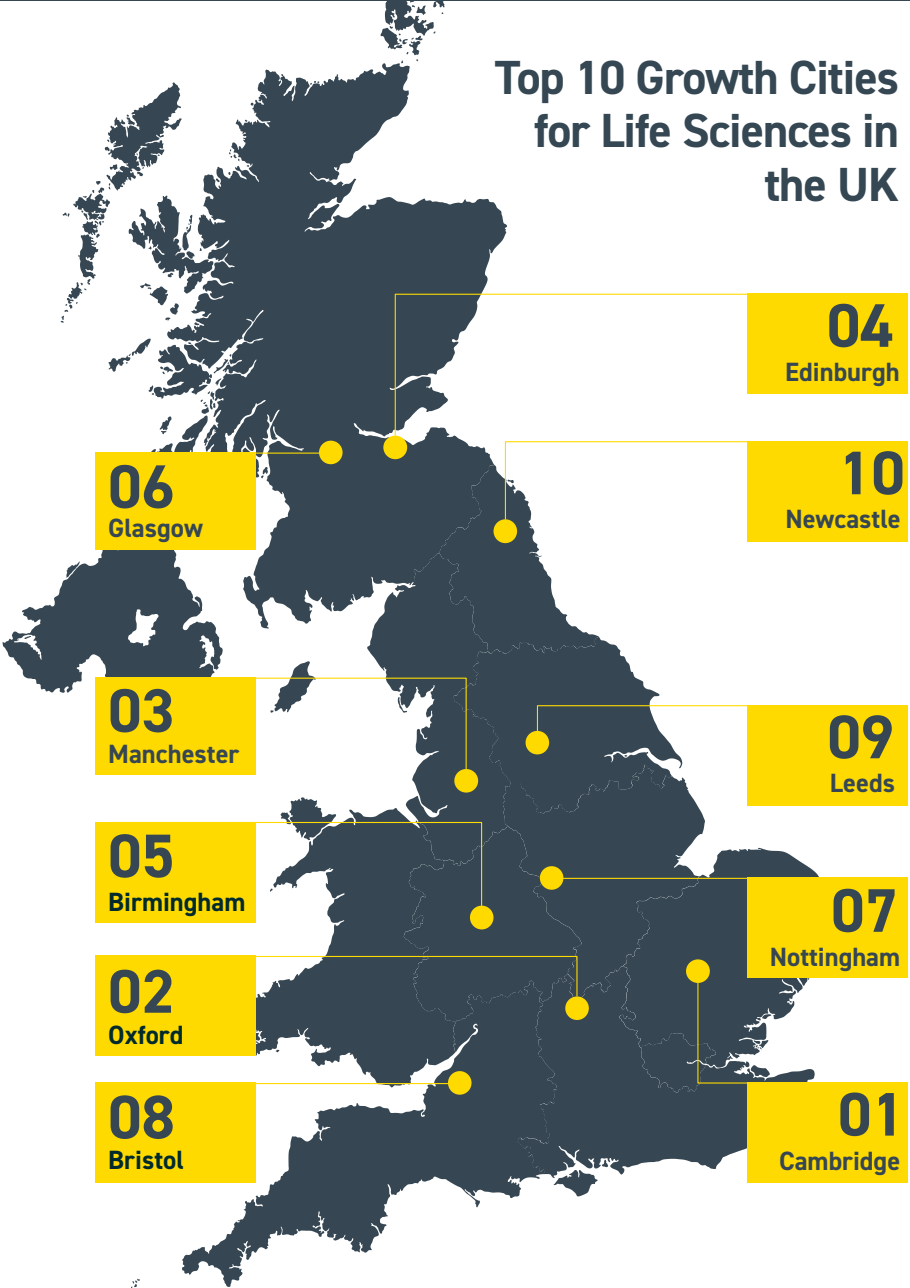
From medical technology to synthetic biology, and digital health to advanced therapeutics, the region is thriving. Unique cross-sectoral collaboration coupled with an exceptional business support and growth ecosystem make the West of England the place to locate and succeed.

WHO'S HERE:

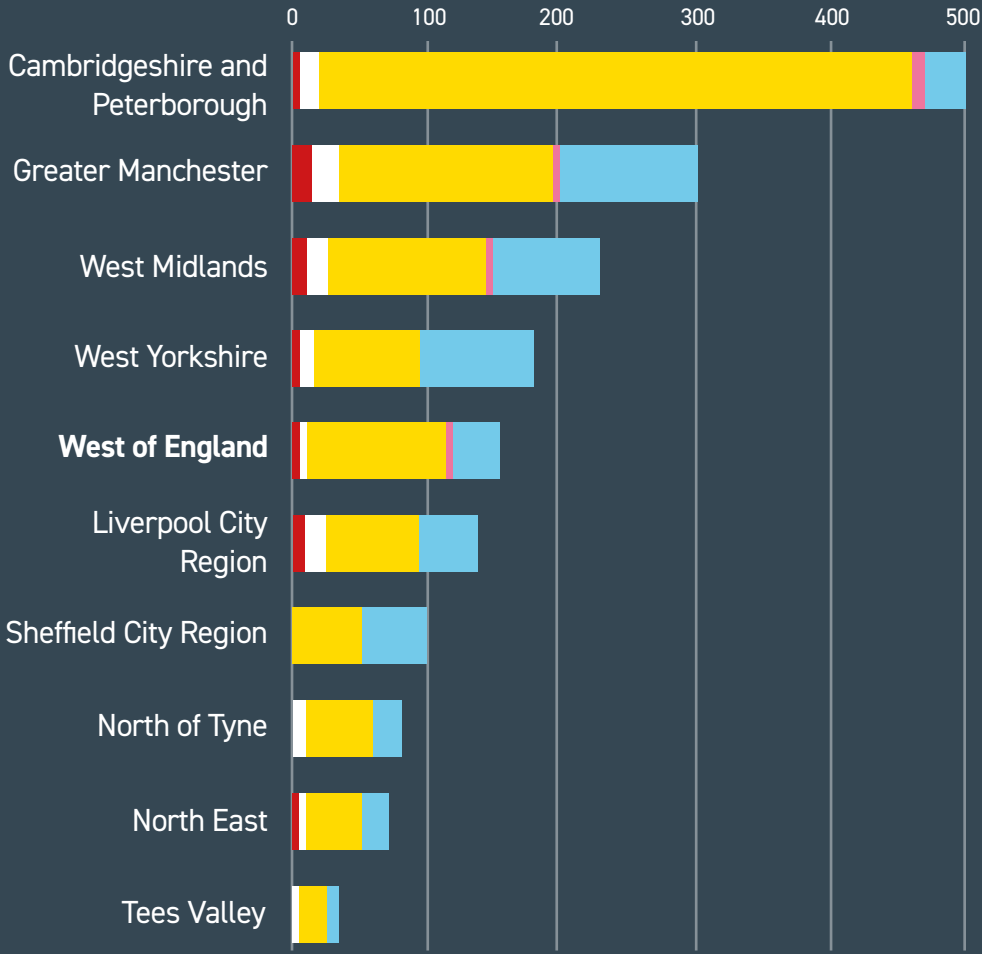


NATIONAL AUDIENCE

Top 10 Growth Cities for Life Sciences in the UK

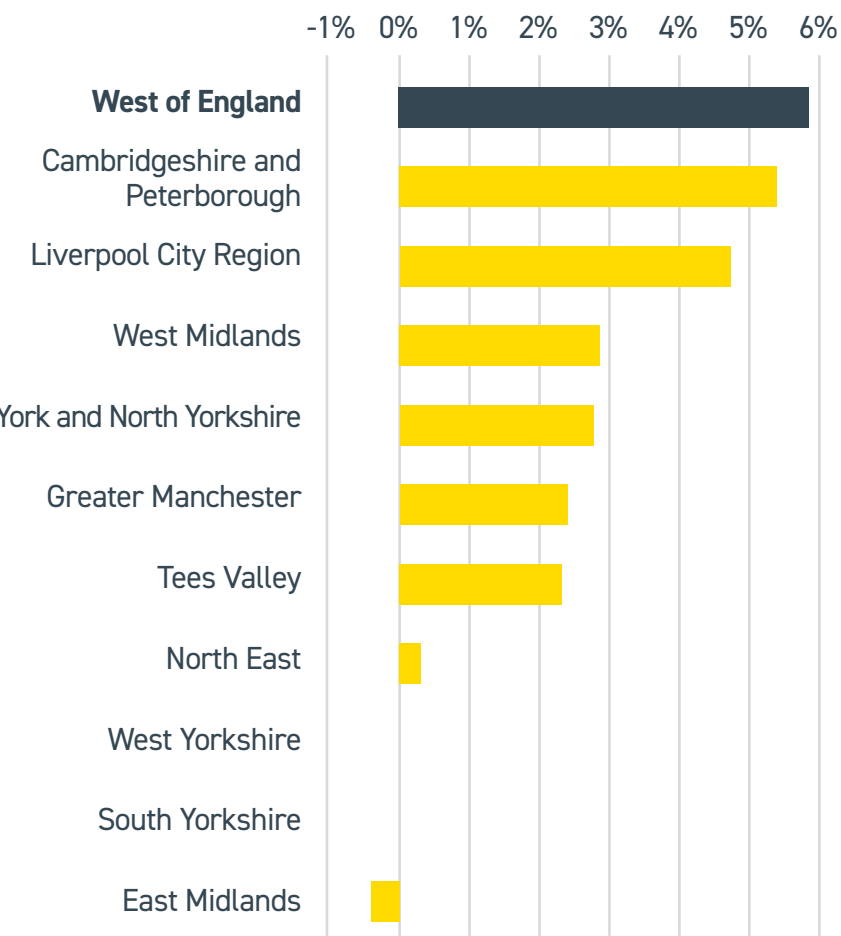


NUMBER OF LIFE SCIENCES BUSINESSES



NATIONAL AUDIENCE

Annual YOY business growth from 2013 – 2023



Source: Office National Statistics (ONS)

Ranking of business density by Combined Authority

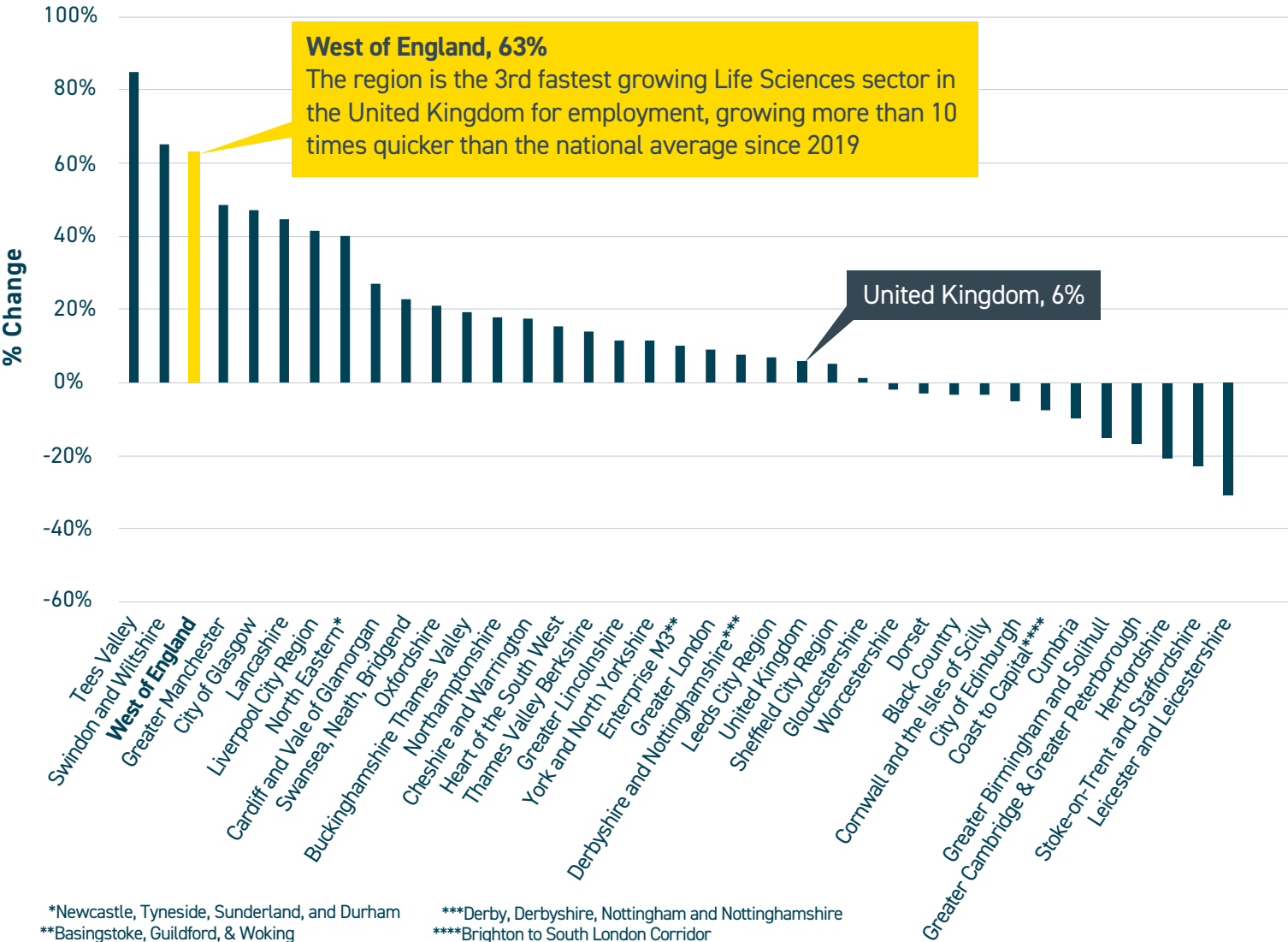
Density ranking		Companies	Population	Companies over pop
1	Cambridgeshire and Peterborough	481	919,082	0.052%
2	Greater London	1,313	8,945,309	0.015%
3	East Midlands	313	2,251,679	0.014%
4	York and North Yorkshire	114	834,409	0.014%
5	West of England	127	982,255	0.013%
6	Greater Manchester	318	2,948,633	0.011%
7	Liverpool City Region	160	1,586,149	0.010%
8	West Yorkshire	228	2,402,161	0.009%
9	South Yorkshire	129	1,407,072	0.009%
10	West Midlands	249	2,980,936	0.008%
11	North East	168	2,012,449	0.008%
12	Tees Valley	29	698,931	0.004%

Note: Includes Greater London

EMPLOYMENT

- The West of England region hosts 190+ Life Science businesses in total, providing approximately 4,219 jobs
- Overall productivity of the sector for the region is £88,000 per employee per year, around £7,000 more than the national average for the sector
- There are 1,646 more employees in the Life Science sector in the West of England than there were in 2019

**% Change in Employment in the Life Science sector 2019-2023
by Local Economic Partnership Area (or city region equivalent)**



LIFE SCIENCE & TECH ROLES IN THE REGION

The table highlights the growth of a selection of roles across the West of England within the sector, between 2019-2022.



Job Type	% Change (2019- 2022)	% of Total Jobs in Industry Group (2021)	Education Level
Biological Scientists and Biochemists	198%	12.10%	Honours, Bachelor's degree
Laboratory Technicians	110%	7.00%	Level 4 NVQ; Intermediate, DipHE, DipFE
Physical Scientists	199%	4.20%	Honours, Bachelor's degree
Research and Development Managers	160%	4.10%	Honours, Bachelor's degree
Natural and Social Science Professionals	212%	3.70%	Honours, Bachelor's degree
Electronics Engineers	223%	3.40%	Honours, Bachelor's degree
Business and Financial Project Management Professionals	227%	3.00%	Honours, Bachelor's degree
Functional Managers and Directors	244%	2.70%	Honours, Bachelor's degree
Business and Related Research Professionals	329%	1.90%	Honours, Bachelor's degree
Chemical Scientists	224%	1.80%	Honours, Bachelor's degree
IT Business Analysts, Architects and Systems Designers	265%	1.70%	Honours, Bachelor's degree
Business and Related Associate Professionals	246%	1.60%	Level 3 NVQ; A Levels
Engineering Technicians	150%	1.40%	Level 3 NVQ; A Levels

A WORLD-LEADING TALENT POOL

The region is home to four world-class universities attended by over 80,000 students, of which over 19,000 are studying Science, Technology, Engineering, and Maths (STEM) subjects.

Invest
**BRISTOL
+ BATH**



University of Bristol ranked #55 Globally and #9 UK (QS World University Rankings 2023).

7th for UK graduate employability with alumni being amongst the highest paid graduates in the UK.



University of Bath named University of the Year 2023, and in the top 5 in the UK for student satisfaction (86.6%). Ranked 4th in the UK for employment after six months (Guardian University Guide 2020).



University of the West of England (UWE) Bristol ranked joint second in England for student satisfaction (National Student Survey 2020).

Circa 76% of UWE research is ranked 'internationally excellent' or 'world leading'.



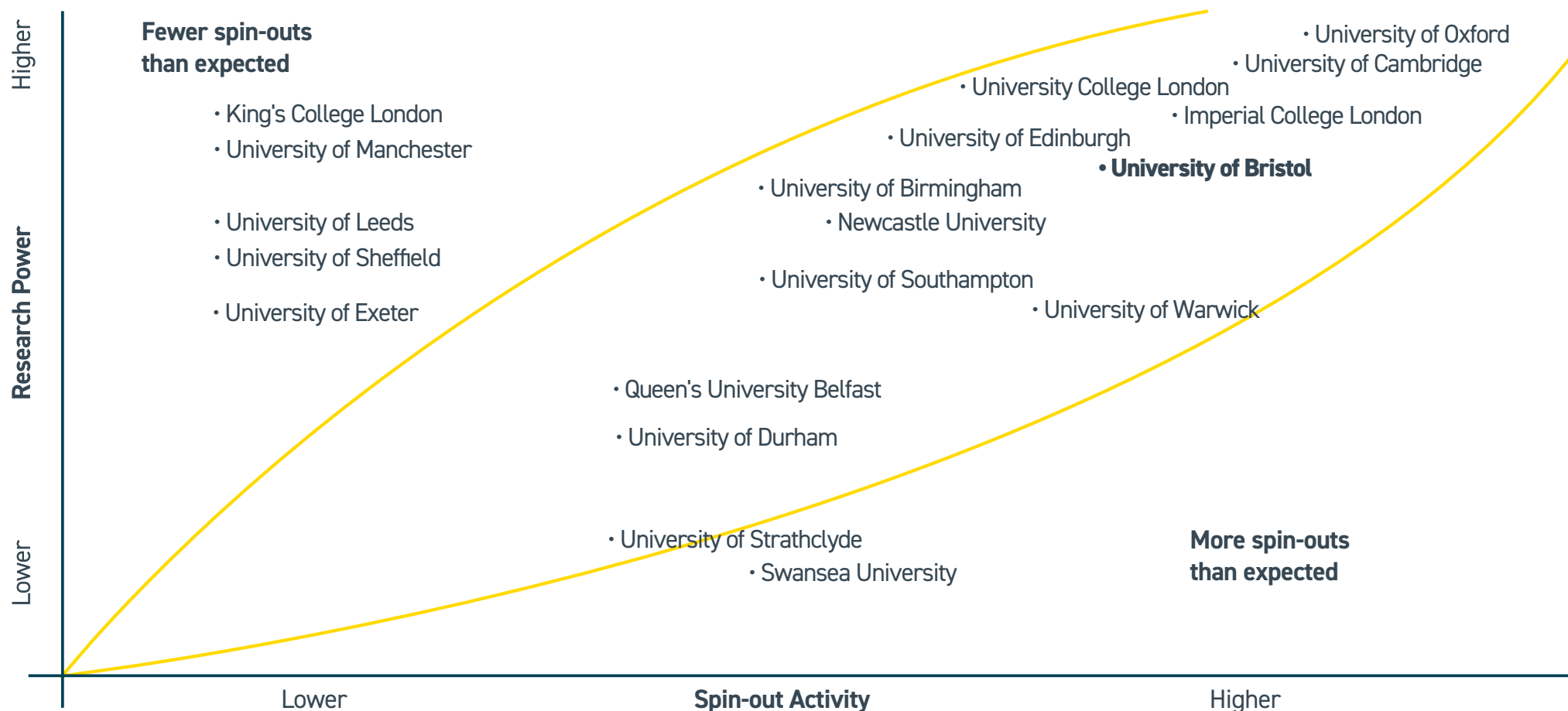
Bath Spa University Bath Spa University is one of the greenest universities in the UK (Uswitch Green Universities Report 2022).

It was also named as the University of the Year for Social Inclusion (The Sunday Times Good University Guide 2024).

UNIVERSITY SPIN-OUTS

Spin-outs v research power

(UK.RI Funding, Leiden Ranking, 'Times Higher Education Ranking)



The University of Bristol entered the top 10 for university-funded spin-outs in 2022. The wider growth of the city and the university as a hub for life science start-ups is arguably driving its attraction to investors. The West of England's upwards progress through the rankings is notable and reflects the growth of Bristol as an increasingly important centre for life sciences.

SETsquared and Science Creates support the renowned work the University of Bristol and the University of Bath do for producing pioneering start-ups, with research power being the driving force for respective universities.

WEST OF ENGLAND ECOSYSTEM

Invest
BRISTOL + BATH

KEY AREAS

CENTRES OF EXCELLENCE

KEY BUSINESSES

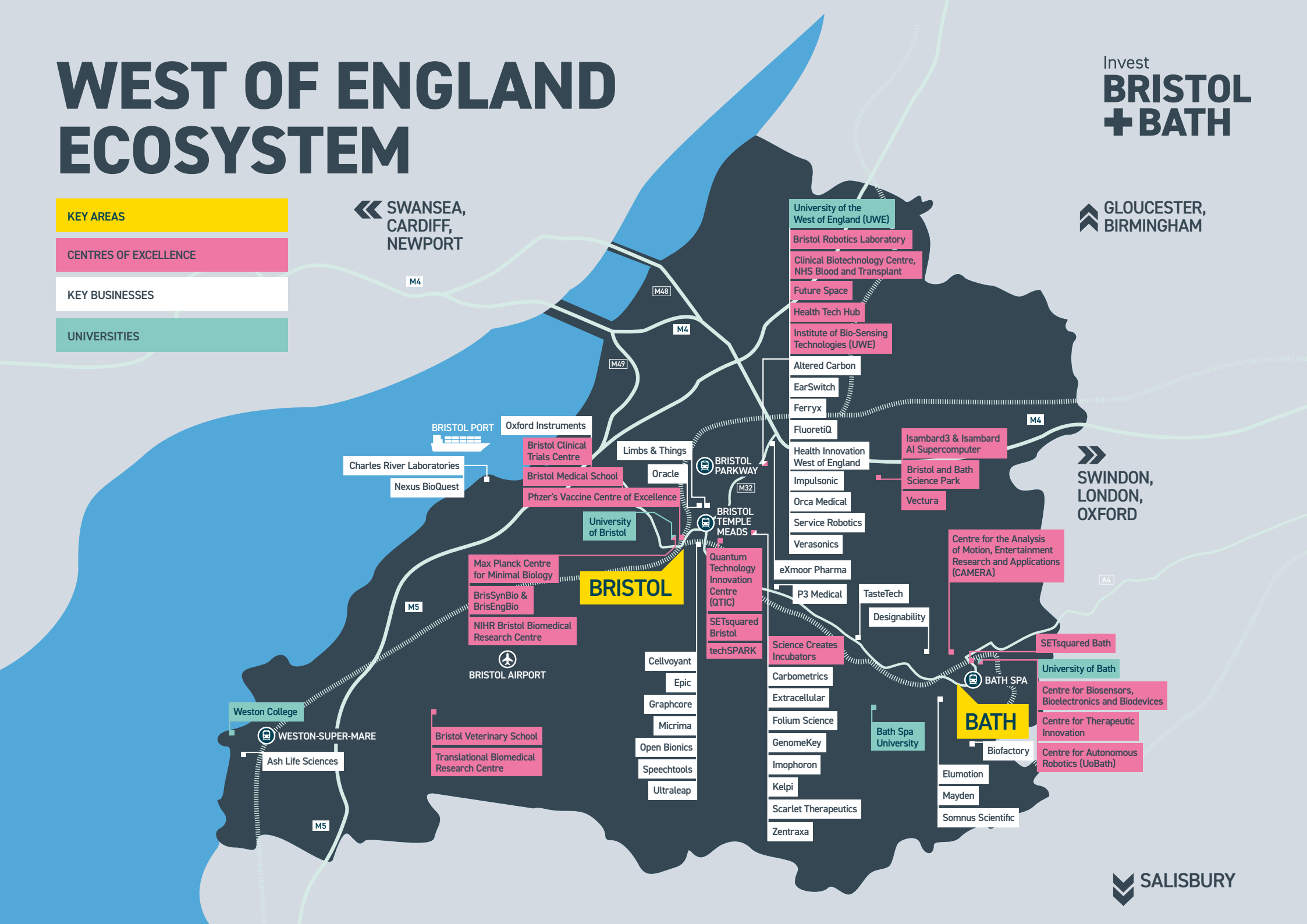
UNIVERSITIES

SWANSEA,
CARDIFF,
NEWPORT

GLOUCESTER,
BIRMINGHAM

SWINDON,
LONDON,
OXFORD

SALISBURY



WORLD CLASS ECOSYSTEM



BrisSynBio for Synthetic Biology

A multi-disciplinary research centre that focuses on the biomolecular design and engineering aspects of synthetic biology.

Max Planck Centre for Minimal Biology

Aims to advance the future of health and medicine by understanding the fundamental nature of life.

Biomedical Research Centre

World leading expertise in genomic and epigenomic epidemiology, mendelian randomisation and innovative statistical methodologies.

MRC Integrative Epidemiology Unit

Leading a proportion of the UK's most advanced population health science research through development and application.

Bristol Health Partners

Bristol Health Partners is one of only eight Academic Health Science Centres in the UK which unites organisations and communities in research, planning and practice to make changes together that improve the local health and care system.

Pfizer Vaccine Centre of Excellence

The first Pfizer Centre of Excellence to open outside of the USA, dedicated to the design, development and use of next-generation vaccines.

Bristol Robotics Laboratory (BRL)

The most comprehensive academic centre for multi-disciplinary robotics research in the UK.

Health Tech Hub

Focused on advancing technology that enables people to live independently and manage their own health and well-being.

Centre for Bioengineering & Biomedical Technologies

Addressing the grand challenges in human health and wellbeing through transdisciplinary and translatable bioengineering research.

SETsquared Partnership

A world leading business incubator and enterprise partnership comprising six research-intensive universities: Bath, Bristol, Cardiff, Exeter, Southampton and Surrey.

Bristol & Bath Science Park

A world-class environment that provides the space, flexibility and support for science and technology businesses.

Centre for Therapeutic Innovation (CTI)

The centre transforms cross-disciplinary translational research, via innovation, to attain precision medicine.

Science Creates

Backed by the University of Bristol and Research England, two central Bristol incubators offering 45,000 sq ft of laboratory, office, and event space for deep tech start-ups. Designed, built, and run by their specialist in-house team.

South West Life Sciences

South West Life Sciences is an advocacy network established to enable connections and increase the visibility of life sciences within the South West's ecosystem and beyond.

techSPARK

techSPARK is the not-for-profit Bristol & Bath growth network. Their team proactively connects and supports the innovators in our region, sparking new ideas, and facilitating knowledge exchange.

CASE STUDY: Science Creates

Invest
**BRISTOL
+ BATH**

A DEEP TECH ECOSYSTEM FUELLING SCIENTISTS AND ENGINEERS TO TRANSFORM DISCOVERIES INTO DISRUPTIVE BUSINESSES



ScienceCreates

Founded in 2015 by deep tech founders seeking the resources to grow their startups, Science Creates is dedicated to creating a UK-wide deep tech community that supports and empowers world-class startups to drive improvements in human and planetary health.

The ecosystem includes specialised incubators, a venture capital firm, a platform of support through training programmes, events, a community of startups and business partners, and a STEM outreach charity.

By scaling these activities, Science Creates envisions a national, founder-led ecosystem nurturing thousands of startups. Since its inception, Science Creates has supported over 125 startups, generating 370 jobs and contributing £125m in annual GVA.

In 2023, member companies raised £28m+ in funding and won 26 awards. By mid-2024, members secured over £33m in investment. Science Creates developed two deep tech incubators in Bristol, with a third site, OMX, due in 2025. Its venture capital arm, SCVC, launched in 2021, supports startups from pre-seed to Series A, managing over \$60m AUM.

In 2023, Science Creates' further expanded their activity portfolio by launching a flagship UK-wide Engineering

Biology Accelerator programme in partnership with UKRI. Their first cohort of 23 graduates saw the formation of 19 companies with two more in the pipeline.

The collective success of their first accelerator unlocked further UKRI funding for a 2nd programme and a unique partnership with leading, global VCs to support it. More than 100 events have been hosted in their Bristol incubators, welcoming over 1500 visitors, connecting academics, innovators, investors, and founders.

A prime example of innovation within the Science Creates ecosystem is Scarlet Therapeutics. Scarlet Therapeutics played a pivotal role in a ground-breaking clinical trial, pioneering the growth of laboratory cultivated blood transfused into patients, marking a world-first achievement.

CASE STUDY: OMX

Invest
**BRISTOL
+ BATH**



ScienceCreates

Scheduled to open its doors in 2025 and backed by the University of Bristol and Research England, OMX is Science Creates' latest deep tech incubator in Central Bristol.

Alongside existing incubators in Saint Philips and Old Market, Science Creates secured £8.5m to develop a third—OMX—, contributing to establishing the UK as a world-leading innovation hot spot. OMX, their newest incubator, will increase Science Creates' state-of-the-art facilities by over 65%, boosting infrastructure for UK university spinouts making ground-breaking quantum and engineering biology discoveries.

The new 30,000 sq. ft facility, housed in a refurbished industrial unit, will be part of

the company's Old Market campus and will provide essential R&D space and specialised infrastructure for start-ups working on the next ground-breaking quantum and biotech inventions.

OMX is designed to accommodate growing companies in need of larger labs and offices, adding scaling-up space to the organisation's current offering in Bristol—a growing need among startups driven by the thriving innovation ecosystem in the area.

Since Science Creates was founded in 2015, the organisation has provided support to more than 125 deep tech start-ups working in healthcare and sustainability, including some of the UK's most promising quantum and biotech companies such as delta.g, QLM, Scarlet Therapeutics and Imophoron.

With OMX, Science Creates' state-of-the-art incubator facilities will increase by over 65% to 75,000 sq ft, significantly expanding the company's capability to support even more companies in the South West.



STRONG NHS LINKS

**THE BRISTOL & BATH REGION
HAS STRONG LINKS TO THE NHS;
DELIVERING SERVICES AND RESEARCH
PROJECTS ACROSS A RANGE OF AREAS,
THROUGH VARIOUS FACILITIES AND
ORGANISATIONS.**

Invest
**BRISTOL
+ BATH**

The North Bristol NHS Trust is one of the largest NHS trusts in the country. It serves a local population of around 500,000 people across South Gloucestershire, North Somerset and North Bristol.

Key capabilities include:

- Orthopaedics
- Neurosciences
- Renal
- Transplant
- Neonatal care

The Royal United Hospitals Bath NHS Foundation Trust provides specialist services for rheumatology, chronic pain and chronic fatigue syndrome/ME. They are currently also building a new Cancer Centre: The Dyson Cancer Centre.

The NHS integrated care system in Bristol & North Somerset is the 2nd most active organisation in Research and Innovation within the UK.

Medical Physics and Bioengineering Department of the University Hospitals Bristol and Weston NHS Foundation Trust provide specialist diagnostic and imaging services, including medical photography.

The headquarters of NHS Blood and Transplant are located in Bristol. It supplies safe blood, tissues and solid organs to UK hospitals, as well as driving world-class research, and leading the way in specialist areas ranging from stem cell transplantation to molecular therapies. It is also home to one of Europe's largest blood transfusion centres.

Our region hosts one of England's 15 Health Innovation Networks, established by NHS England to spread innovation at pace and scale – improving health and generating economic growth. Health Innovation West of England brings together the local health service community, industry, higher education, research bodies, patients and the wider public to work in partnership. This collaboration ensures innovations, improvements and best practice benefit more patients faster.

CASE STUDY:

EarSwitch

Invest
BRISTOL
+ BATH

**PIONEERING INCLUSIVE, AI-DRIVEN MEDICAL
MONITORING TECHNOLOGY FOR GLOBAL
HEALTHCARE TRANSFORMATION**

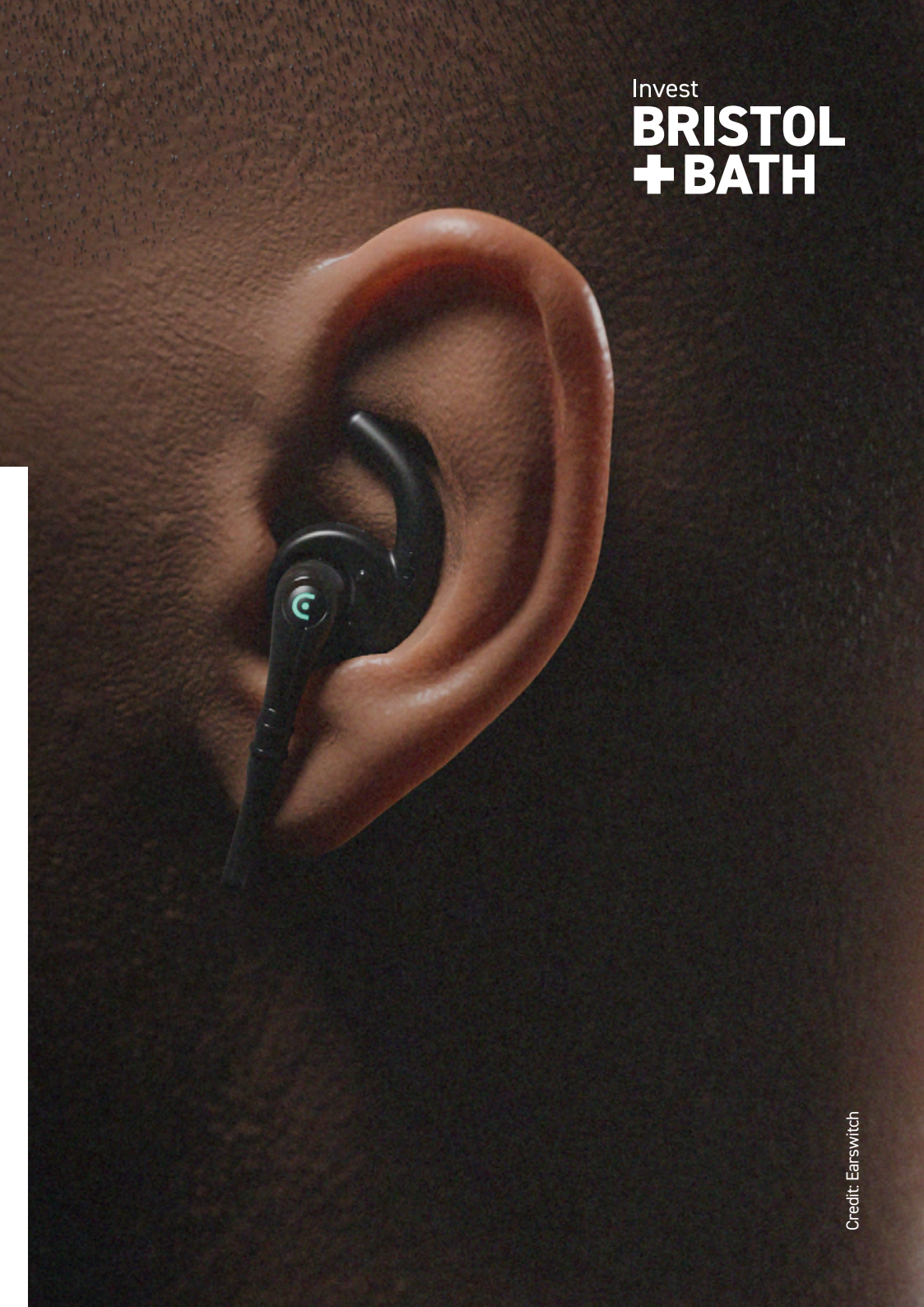


EarSwitch is transforming medical monitoring with its patented technology, “EarMetrics,” which uses miniature sensors in the ear canal to gather accurate, racially inclusive, multi-parameter health data. Designed for integration into medical devices, earphones, and hearing aids, EarMetrics aims to set a new global standard for AI-driven health insights.

Since receiving its first UKRI grant in 2022, EarSwitch has achieved significant progress. They have successfully demonstrated the ability to measure multiple health parameters, including pulse rate, breathing rate, blood oxygen levels, and digital blood pressure biomarkers. Additionally, EarMetrics aims to offer accurate health readings regardless of skin colour, addressing gaps in traditional monitoring technology. The company was also selected for the prestigious “Innovative Device Access Programme” (IDAP), which fast-tracks regulatory approval for life-saving technologies.

EarSwitch aims to democratise healthcare by providing inclusive, accessible, and accurate monitoring solutions. Their goals include ensuring global healthcare equity, offering personalised health data management, and enabling early detection of chronic conditions using EarMetrics.

EarSwitch is poised to make a lasting impact on healthcare worldwide through its innovative approach to medical monitoring.



DIGITAL HEALTH, MEDICAL TECHNOLOGY & DIAGNOSTICS

Invest
**BRISTOL
+ BATH**

Credit: Bristol Robotics Laboratory



CAPABILITIES WITHIN THE REGION

The Health Tech Hub facility at the University of the West of England's Frenchay Campus is dedicated to advancing technology that enables people to live independently and manage their own health and well-being. This is achieved through their work in the Assisted Living Lab.

Bristol Robotics Laboratory (BRL) is the most comprehensive academic centre for multi-disciplinary robotics research in the UK. It is a partnership between the University of the West of England and University of Bristol.

KEY COMPANIES WITHIN THE REGION

Digital Health	Medical Technology	Diagnostics
Okko Health	Open Bionics	éclateral
Micrima	Earswitch	FluoretiQ



DIGITAL HEALTH

Digital health technologies use computing platforms, connectivity, software, and sensors for health care and related uses.



MEDICAL TECHNOLOGY

MedTech can save lives, improve health and contribute to sustainable healthcare. Through innovative devices and diagnostics, the industry delivers value to patients, healthcare professionals, healthcare systems and society.



DIAGNOSTICS

Technological advances in diagnosis techniques can more rapidly diagnose and monitor disease and provide prognoses for patient triage and treatments. This helps to avoid the cost and health risks of using ineffective medicines.



ASSISTED LIVING

Robotics is playing an ever-increasing role in life sciences applications. Not only are robots taking on monotonous tasks and streamlining processes in laboratory settings, they are also leveraging advances in delivering living assistance to those who need it most.

CASE STUDY: eXmoor Pharma

Invest
**BRISTOL
+ BATH**

**THE BRISTOL AREA IS A GREAT PLACE
TO BUILD ON OUR HIGHLY SKILLED AND
KNOWLEDGEABLE CONSULTANCY**



Since being founded as a biopharmaceutical and cell therapy manufacturing consultancy in 2004, eXmoor has since grown into a globally recognised leader in its field, completing more than 550 projects across 16 countries. In 2007 cell and gene therapy (to treat disease) were in their infancy, and so the team refashioned and brought in new skillsets to enable them to follow this new market.

In 2017, eXmoor Pharma moved into one of the region's tech accelerators: FutureSpace, based at the University of the West of England.

Following steady growth at FutureSpace, eXmoor completed a \$35 million Series A round in May 2023 to launch eXmoor's Cell and Gene Therapy Centre, a 65,000 sq ft GMP manufacturing facility, purpose-built to develop and manufacture autologous and allogeneic cell therapies, as well as viral vectors.

eXmoor's Cell and Gene Therapy Centre obtained its Manufacturing and Import Authorisation for Investigational Medicinal Products (MIA(IMP)) license from the UK's Medicines and Healthcare products Regulatory Agency (MHRA) in 2024, marking the end of a two-year project to design, build and bring online a state-of-the-art advanced therapies manufacturing facility.

The license is a major milestone in eXmoor's 20-year journey from a consultancy into a full-service, global CGT contract development and manufacturing organization (CDMO).

Angela Osbourne (Founder and CEO):

"The Bristol area is a great place to build on our highly skilled and knowledgeable consultancy and process development teams, attracting talent from the excellent local universities in Bristol, Bath and Cardiff. We have been fortunate to be able to continue and expand our operations at the University of the West of England in the Future Space innovation centre operated by Oxford Innovation and we would like to thank them for their continued support."

ADVANCED THERAPEUTICS & BIOPHARMA



CAPABILITIES WITHIN THE REGION

NHS Blood and Transplant Gene Therapy Hub (Filton, North Bristol)

Part of the Clinical Biotechnology Centre (CBC). Manufacturing GMP-grade plasmids for over 20 years.

- The Hub supports both early phase academic-led and commercial gene therapy trials
- Facilitates the provision of cost-effective viral vectors and plasmid DNA to stimulate the UK's gene therapy sector



ADVANCED THERAPEUTICS

Advanced Therapeutics are treatments used to alleviate or prevent a particular disease. Examples of therapeutics include drug therapy, medical devices, nutrition therapy and stem-cell therapies.

A research project combining teams in Bristol, Cambridge, London, and NHS Blood and Transplant, are currently focused on growing red blood cells in a laboratory that can carry oxygen from the lungs to the rest of the body.

KEY COMPANIES WITHIN THE REGION

Advanced Therapeutics

eXmoor Pharma

Imophoron

Scarlet Therapeutics



BIOPROCESSING & BIOPHARMA

Bioprocessing is the process of increasing the number of living cells or other biologic systems/ components (such as bacteria, viruses, enzymes, proteins, or nucleic acids) in a commercial bioreactor for biopharmaceutical manufacturing.

The University of Bristol and the University of Bath both have focussed research facilities identifying the networks of biomolecules.

BioPharma

GenomeKey

Pfizer

CASE STUDY: Future Space

Invest
**BRISTOL
+ BATH**

**future
_space™**

Powering Innovation

Nurturing trailblazing companies inspired to work at the cutting-edge of their industry, Future Space is an award-winning innovation centre for high-tech businesses. Powering the worlds of advanced engineering, health & life sciences, digital, green, and creative technology, Future Space is co-located at the University of the West of England in the heart of the University Enterprise Zone, bringing together a unique collision of workspace and university-partnered business support and research & development.

With a total net lettable space of 33,231 sq ft hosting 55+ members, Future Space maintains 11 wet labs with 6 dry labs also available, shared lab offering of 3 spaces divided into a microbiology lab, a tissue culture lab, and a general shared lab.

Managed by Oxford Innovation Space, the UK's premier purveyor of innovation and centres, Future Space offers high-spec lab spaces, technical workshops, and desirable office spaces, supporting companies throughout each stage of the scale-up journey. Since first opening its doors in 2016, Future Space has strived to be the home for boundary-pushing technology innovators. Over that time, the centre has generated:

- £100+ million in investment brought to Bristol
- 500+ jobs across the sector
- £27.5+ million in GVA for the local economy
- 300+ new and improved products and services
- 100+ internship opportunities for students

The future looks bright for this community, as new Centre Director Professor Matt Freeman has strengthened collaborative innovation practices including a new university-partnered R&D pathway that brings academics, students, and facilities at UWE Bristol together with the entrepreneurs and businesses at Future Space. As a result, everything Future Space does is rooted in nurturing collaboration, innovation, and growth for its companies – through which the centre drives the university's enterprise priorities around income generation, knowledge exchange and graduate outcomes.

Businesses such as Albotherm – who are creating tech that will make the world more sustainable – are 'proud of the open, connected, and collaborative culture that's been built that gives us freedom to experiment and helps businesses like ours to thrive'.

AGRI-TECH

Invest
BRISTOL
+ BATH



Credit: LettUs Grow

CAPABILITIES WITHIN THE REGION

The Food WorksSW is a vibrant centre of excellence for nurturing food and drink business, with state-of-the-art facilities, technical support and expert advice for start-up and potential high growth companies.

The region is home to expertise across its network through the Centre for Innovation in Livestock Excellence, Bristol Centre for Agriculture Innovation and Vertical Farming.



AGRI-FOOD

The South West is England's largest and most rural region with rich, diverse natural resources. Our strong and growing network of over 200 innovative Agri-Tech companies compliments the industry-leading academics and Research and Development institutions. World-class technology supports efficiency and innovation in the celebrated South West livestock farming, aquaculture, and food industries.

Invest Bristol and Bath plays a key role in the coordination of the wider South West Agri-Tech network, a group of key stakeholders that look to harness the region's strengths.

Complimenting Agri-Tech, nutritional science has had a major impact on public health by identifying optimal nutrient intakes on a population-wide basis.

Farm491 is a leading South-West based innovation space focused on the future of farming and food systems. Based at the Royal Agricultural University, Farm491 support entrepreneurs as they advance their business with potential for impact in the agricultural sector.

KEY COMPANIES WITHIN THE REGION

Agri-tech

LettUs Grow
Dyson Farming
Yeo Valley

Nutrition

Extracellular
Glaia
TasteTech

THE WEST OF ENGLAND ROADMAP

Invest
BRISTOL
+ BATH



MISSION STREET PROJEKT

Mission St/

Mission Street, a leading UK specialist in science and innovation real estate, are delivering the South West's largest commercial innovation building known as Projekt in Bristol city centre. The existing building was originally designed in the 1970s as a printing press and benefits from large floor plates with 4 metre floor-to-ceiling heights and high vibration resilience throughout – ideal for converting to innovation uses. The proposed scheme has been designed to provide a mix of workshops, offices, wet and dry labs and collaboration space to accommodate the region's impressive growth across a broad range of innovation sectors including Life Sciences, AI, Quantum, Cyber Security, Engineering and Robotics.

Bristol's incubators are all often at capacity and the wider West of England needs suitable specialist real estate to accommodate the trajectory of high-growth companies, as well as leading institutions and established companies who recognise the potential and strength of Bristol's innovation ecosystem. Mission Street are currently engaged with several occupiers and institutions to deliver bespoke accommodation, with Projekt due to deliver over 100,000 sq ft of innovative space to the region.



UNIVERSITY OF BRISTOL TEMPLE QUARTER ENTERPRISE CAMPUS



The Temple Quarter Enterprise Campus (TQEC) will cut across academic disciplines and enhance connections with industry partners, civic organisations, and local communities to co-create solutions to the most pressing challenges of today.

TQEC generates new opportunities for partnerships, interdisciplinary research, inclusive education, and civic engagement. It will amplify the capabilities and potential of digital, business, and social innovation, responding to the ever-evolving demands of our changing world. This innovative campus is catalysing development in Bristol Temple Quarter, the UK's largest urban regeneration project.

FINANCIAL SUPPORT

WE'VE CREATED A PACKAGE OF
SOFT-LANDING INCENTIVES TO HELP
BUSINESSES LAND SEAMLESSLY

Invest Bristol & Bath understands the impact that opening a new premises or relocating can have for a business and its employees.

To help alleviate this, we've created a package of soft-landing incentives to help new businesses land seamlessly in the region.

The package is offered in partnership with a variety of coworking and shared space providers, network and event organisations, recruitment agencies, specialists across various sectors and other providers.

In addition, we work closely with the West of England Growth Hub, a free signposting service dedicated to supporting small and medium sized enterprise (SMEs) in their growth and prosperity. They collaborate with approved support providers and are well-versed in identifying additional grant and funding opportunities.

We're here to support your growth and make your transition to the West of England as smooth as possible.

Businesses in our region are welcome to apply for grants and funds such as (subject to eligibility):

- Business Innovation Fund
- Business Growth & Adaptions Grant
- Carbon Surveys

Invest
BRISTOL
+ BATH



INVEST IN BRISTOL + BATH

A confidential and complimentary service.



International business

Benefit from our partnership with the Department for Business & Trade, connecting you to UK government and business support.



Talent and education

With a highly skilled workforce, we offer detailed analysis of our talent pool, including all experience levels and educational institutions.



Property solutions

We can help you relocate teams, set up new centres, or find office, industrial, or development sites, offering tailored property solutions from phased growth to fully functioning properties.



Sector specialists

We connect you to business experts in Aerospace, Advanced Engineering, Creative & Media, Tech & Digital, Nuclear, and Fintech.



Regional partners

We can arrange regional visits to help you make informed investment decisions, showcasing our collaborative and welcoming environment.



Regional visits

Connect businesses with stakeholders and partners across the South West to support your investment and business case.



Industry connections service

Get a head start with introductions to business support and recruitment providers.



Networks

Collaborate with industry networks, R&D assets, and trade associations. Connect with like-minded businesses and raise your profile.

Invest
**BRISTOL
+ BATH**

WHO'S ALREADY HERE:

NETFLIX **amazon**

GRAPHCORE 

 **AIRBUS**

ultraleap  

 **ORACLE**

**HARGREAVES
LANDOWN** 

Invest **BRISTOL + BATH**

Invest Bristol & Bath
invest@bristolandbath.co.uk
www.bristolandbath.co.uk



 **WEST OF
ENGLAND**
Combined Authority

Credit: Roman Baths

Invest **BRISTOL + BATH**

Inward Investment specialists who can facilitate introductions to the West of England life sciences sector.

Tap into our extensive network and learn why our region is thriving. If you're considering setting up here, we offer expert guidance, connections, and support.



Invest Bristol & Bath
invest@bristolandbath.co.uk
www.bristolandbath.co.uk

