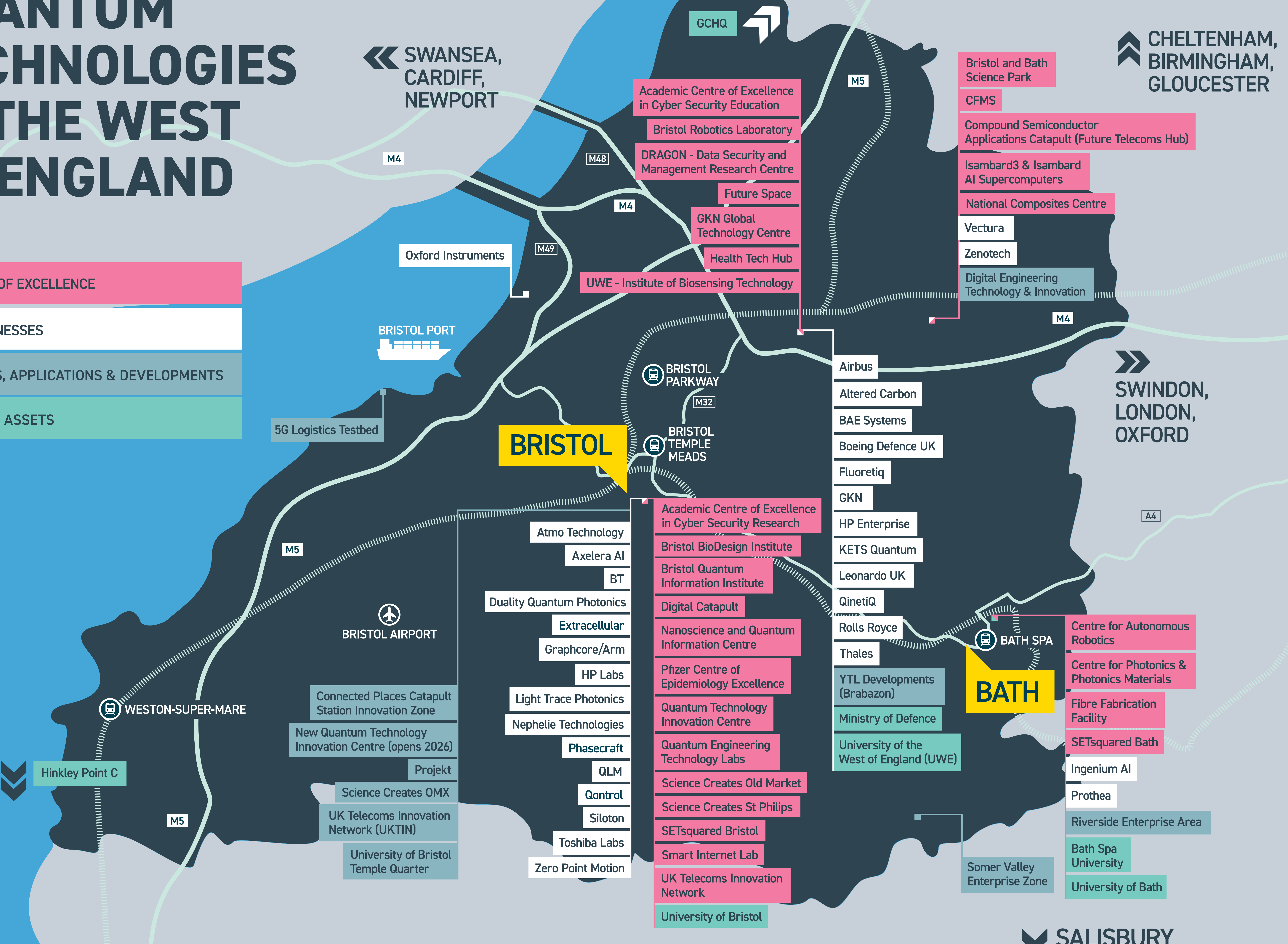


QUANTUM TECHNOLOGIES IN THE WEST OF ENGLAND

- CENTRES OF EXCELLENCE
- KEY BUSINESSES
- TESTBEDS, APPLICATIONS & DEVELOPMENTS
- REGIONAL ASSETS



SWANSEA, CARDIFF, NEWPORT

CHELTENHAM, BIRMINGHAM, GLOUCESTER

SWINDON, LONDON, OXFORD

- Bristol and Bath Science Park
- CFMS
- Compound Semiconductor Applications Catapult (Future Telecoms Hub)
- Isambard3 & Isambard AI Supercomputers
- National Composites Centre
- Vectura
- Zenotech
- Digital Engineering Technology & Innovation

BRISTOL

BATH

- GCHQ
- Academic Centre of Excellence in Cyber Security Education
- Bristol Robotics Laboratory
- DRAGON - Data Security and Management Research Centre
- Future Space
- GKN Global Technology Centre
- Health Tech Hub
- UWE - Institute of Biosensing Technology

- Airbus
- Altered Carbon
- BAE Systems
- Boeing Defence UK
- Fluoretiq
- GKN
- HP Enterprise
- KETS Quantum
- Leonardo UK
- QinetiQ
- Rolls Royce
- Thales
- YTL Developments (Brabazon)
- Ministry of Defence
- University of the West of England (UWE)

- Centre for Autonomous Robotics
- Centre for Photonics & Photonics Materials
- Fibre Fabrication Facility
- SETsquared Bath
- Ingenium AI
- Prothea
- Riverside Enterprise Area
- Bath Spa University
- University of Bath

- Atmo Technology
- Axelera AI
- BT
- Duality Quantum Photonics
- Extracellular
- Graphcore/Arm
- HP Labs
- Light Trace Photonics
- Nephelie Technologies
- Phasecraft
- QLM
- Qontrol
- Siloton
- Toshiba Labs
- Zero Point Motion

- Connected Places Catapult Station Innovation Zone
- New Quantum Technology Innovation Centre (opens 2026)
- Projekt
- Science Creates OMX
- UK Telecoms Innovation Network (UKTIN)
- University of Bristol Temple Quarter

Hinkley Point C

SALISBURY