



**PATCHWAY
STUDIOS**



PERFECTLY PLACED & TOTALLY FLEXIBLE BUILDSPACE, OFFICES & WORKSHOPS

Why not make Bristol home to your next production?

Bristol has long been established as a major centre of TV and film production. Home to BBC Bristol and the world-renowned BBC Natural History Unit, Academy Award-winning Aardman Animations as well as Patchway Studios, the newest studio facility in the West of England, production is a major contributor to Bristol's creative industries.

In 2017 we were named a UNESCO City of Film because of the strength of our moving image culture and industry. The city boasts a strong, skilled-pool of locally-based crew and facilities companies, including award-winning freelancers, production and post-production companies. Bristol consistently tops the polls for being one of the best UK cities to work in.



LOCATIONS

Bristol's dynamic history and culture has contributed to its vibrant character, and the city can offer locations to suit any script.

Backdrops range from the sweeping Georgian terraces of Clifton, to the colourful street art of Stokes Croft and Southville; from the majestic views of Clifton Suspension Bridge and Avon Gorge, to urban high-rises; from our picturesque historic harbour to stunning cityscape views.

With more than the average number of landmarks to show off, this versatile city has doubled for several locations around the world and beyond – London, Marseille, Jersey, Ireland and Mars, to name a few!

Not only is Bristol located within easy reach of cities like London, Cardiff, Bath, Gloucester, and Birmingham, it's also close to the film-friendly counties of the South West.

Placed on the edge of North Bristol, Patchway Studios is blessed with a rich and diverse location catchment within 45min travel time, making it an ideal base for contemporary and period shows alike.

9MIN TO BRISTOL PARKWAY TRAIN STATION

Services to London Paddington take 75min and run every half an hour

LESS THAN 30MIN TO CENTRAL BRISTOL

Easy reach for City Centre lovers of food, culture and night life

E-SCOOTER CONNECTED

Take advantage of Bristol's city wide e-scooter network with collection & drop off right outside

GREAT MOTORWAY ACCESS

9min drive to the M4/M5 interchange

ON YOUR DOORSTEP

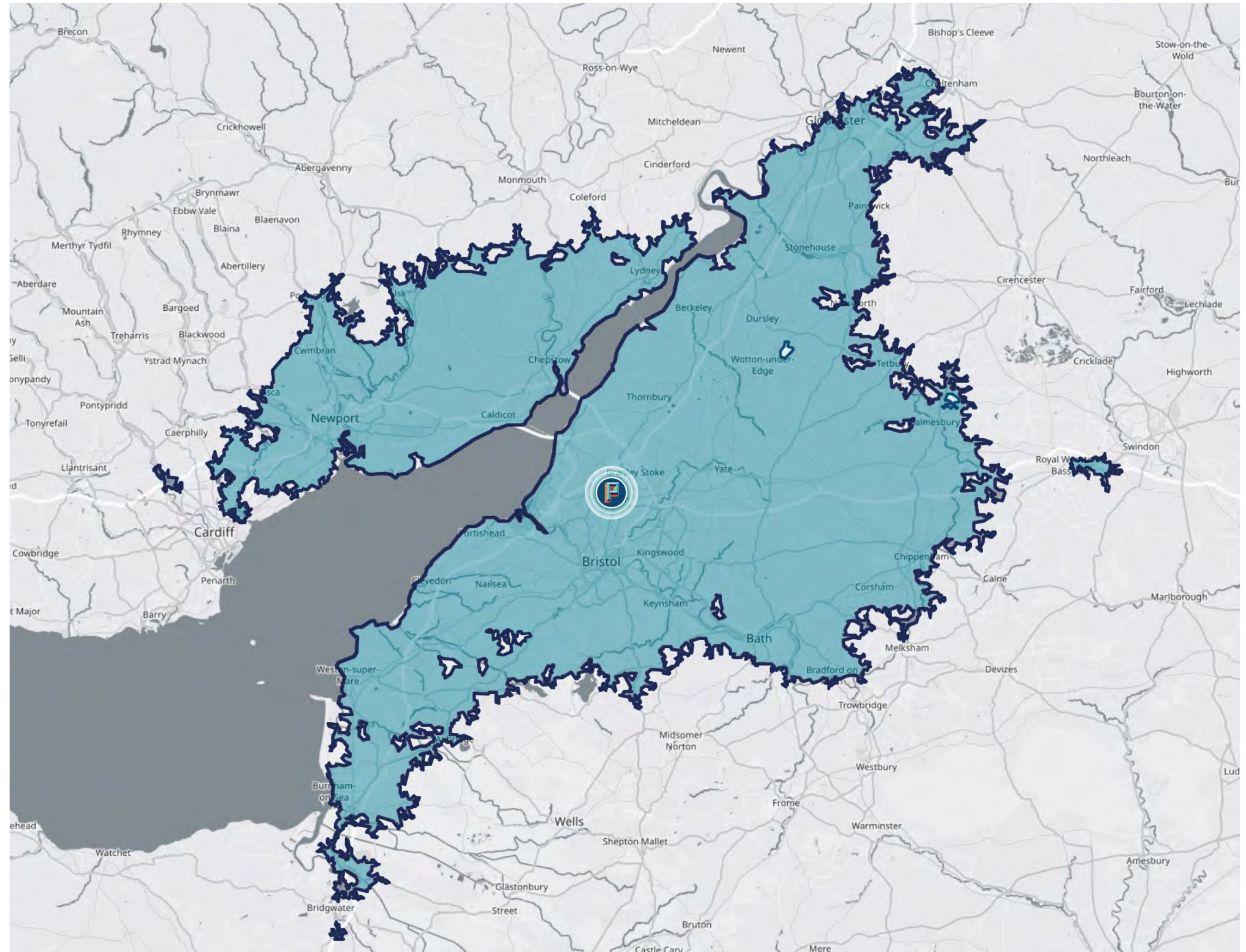
Super choice of quality hotels, restaurants & shops within very easy reach, the site is adjacent to The Mall Shopping Centre

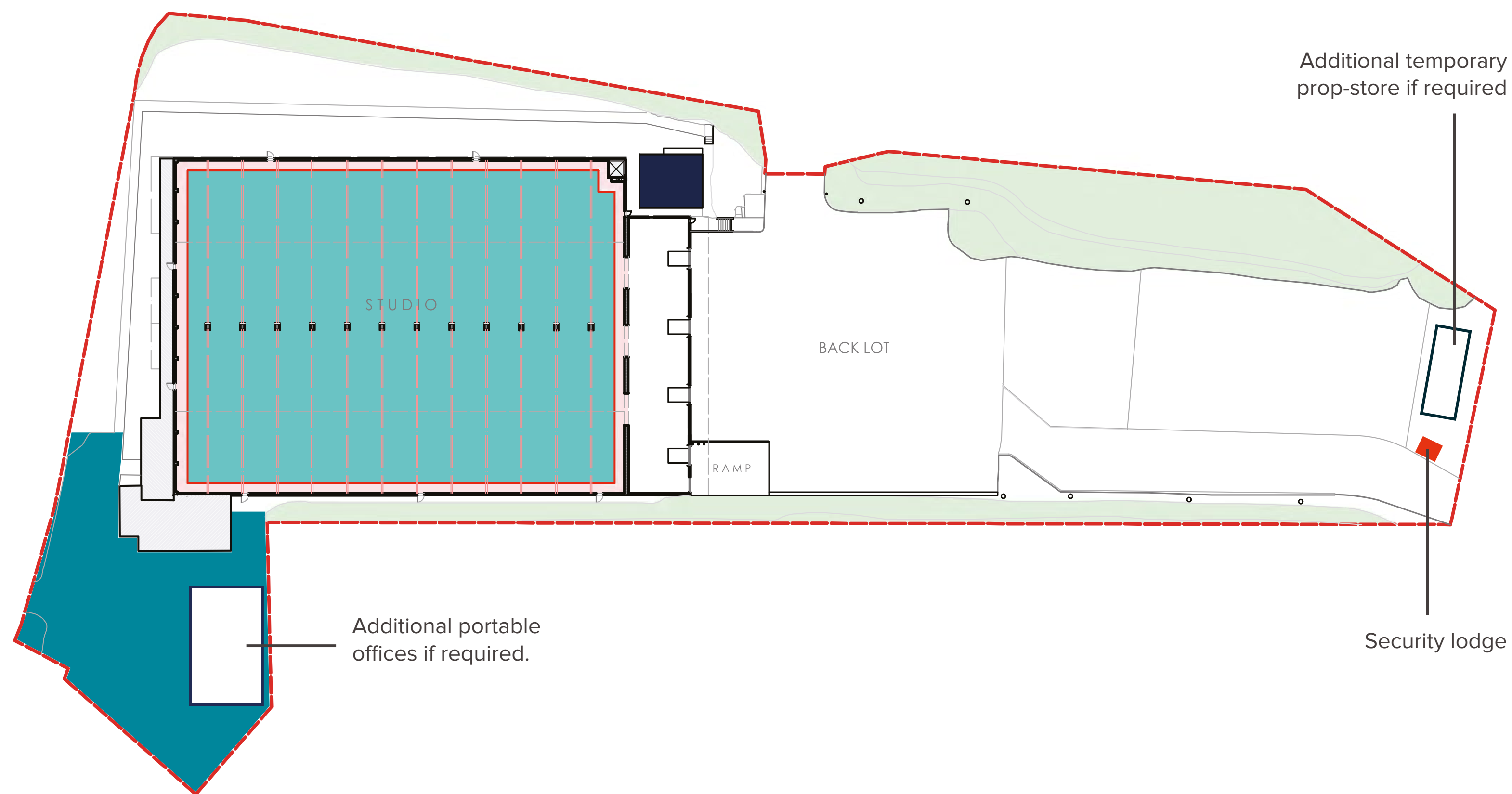
GREAT LOCATIONS

Beautiful coasts, historic Bath and stately homes plus modern day city centres, infrastructure and green spaces are all within reach

WORLD CLASS CREW

On the doorstep of a highly talented crew-base in and around Bristol





STUDIOS

This is the impressive epicentre of Patchway Studios. Brought to you by professionals with long-standing experience and insight-driven expertise, it provides everything required to support the production of ground-breaking film and television content. With demand for high-end content rising exponentially, Studio 1 is designed specifically to help you deliver it smoothly and efficiently.

SIZE

37k sqft of build space, can be split into 2 x 17k if required
7.8m to grid, 7k sqft internal ancillary space
56k sqft of backlot / unit base / parking areas

POWER

600kVA accross 3 power boards.
13A sockets throughout as well as multiple 16A & 32A outlets spread inside and out

REAR YARD

Dedicated gate access to private yard of c.8k sq ft
2k+ sqft rigid marquee for use as prop store / construction. Brick built prop offices, welfare and secure storage

OFFICES

Existing two storey office block with facilities c.1800 sq ft (2 x 900 sq ft)
Additional portable on site offices can be provided, enabling bespoke solutions to your specific production

SECURITY

Dedicated security lodge with wifi CCTV system, allowing 24/7 remote viewing

- ✓ PERFECT LOCATION
- ✓ ADAPTABLE SPACES
- ✓ FLEXIBLE TERMS

Unit 1, Highway Rd,
Patchway, Bristol BS34 5DJ
/// movie.merit.lifted

0117 2510334
shoot@patchwaystudios.com
www.patchwaystudios.com

”

Patchway Studios was a fantastic home for season one of *The Winter King*. Not only did the space accommodate some of the more ambitious set builds of the series, the location at Cribbs Causeway provided excellent access to our filming locations across the South-West and Wales.

Bad Wolf Ltd

Patchway Studios was our home for 11 months and the local community couldn't have been more welcoming. It gave us the space to build interior and exterior sets large and small. As well as providing an accessible base to film on location across South Wales and the South West.”

Lizzy Ralph, Studio Manager *The Winter King*

