

**BRISTOL
+ BATH**

LOVE LIFE LOVE BRISTOL AND BATH

An essential guide for
professionals and their families
moving to the West of England.

WELCOME TO BRISTOL + BATH

Our region is truly world-class, with a population of 1.1 million and a global perspective, encompassing Bristol, Bath & North East Somerset, South Gloucestershire, and North Somerset. We are proud of our diverse community and the well-established reputation for nurturing creativity and innovation.

Beyond our contemporary cities, scenic countryside, and abundant cultural heritage, our region provides an exceptional quality of life. This is enhanced by best-in-class education, excellent transportation networks, and vibrant, thriving communities that are perfect for calling home.

CONTENTS

**WHERE
IN THE
WORLD**
PAGE 3

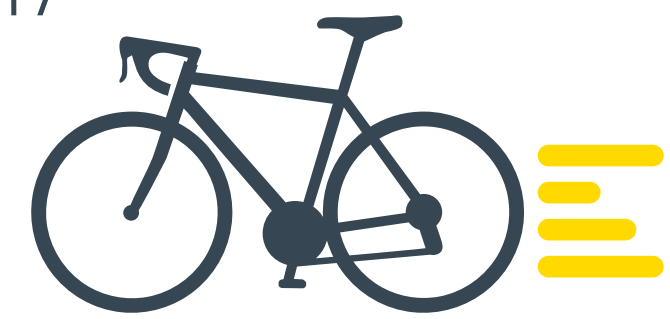



**QUALITY
OF LIFE**
PAGE 4

EDUCATION
PAGE 16



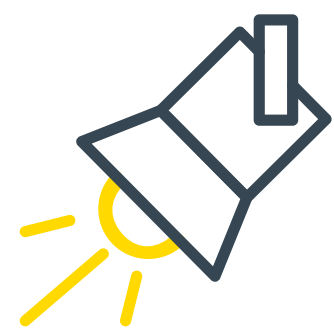
TRANSPORT
PAGE 17



ENVIRONMENT
PAGE 8



**SPOTLIGHT
ON...**
PAGE 10



**WHERE TO
LIVE** PAGE 15

**AN INNOVATIVE
ECONOMY**
PAGE 18



**WORLD LEADING
EXPERTISE**
PAGE 20



**DISCOVER
WHAT MAKES
OUR REGION
A GREAT PLACE
TO LIVE, WORK,
AND PLAY...**

150
PEOPLE PER WEEK

relocate from London
to Bristol (ONS).



WHERE IN THE WORLD

85%
OF THE UK
within 4 ½ hours
of **Bristol & Bath**

BRISTOL AIRPORT
FLYING TO OVER
115+
DESTINATIONS

2hr 59mins
TO MANCHESTER
BY FASTEST
TRAIN

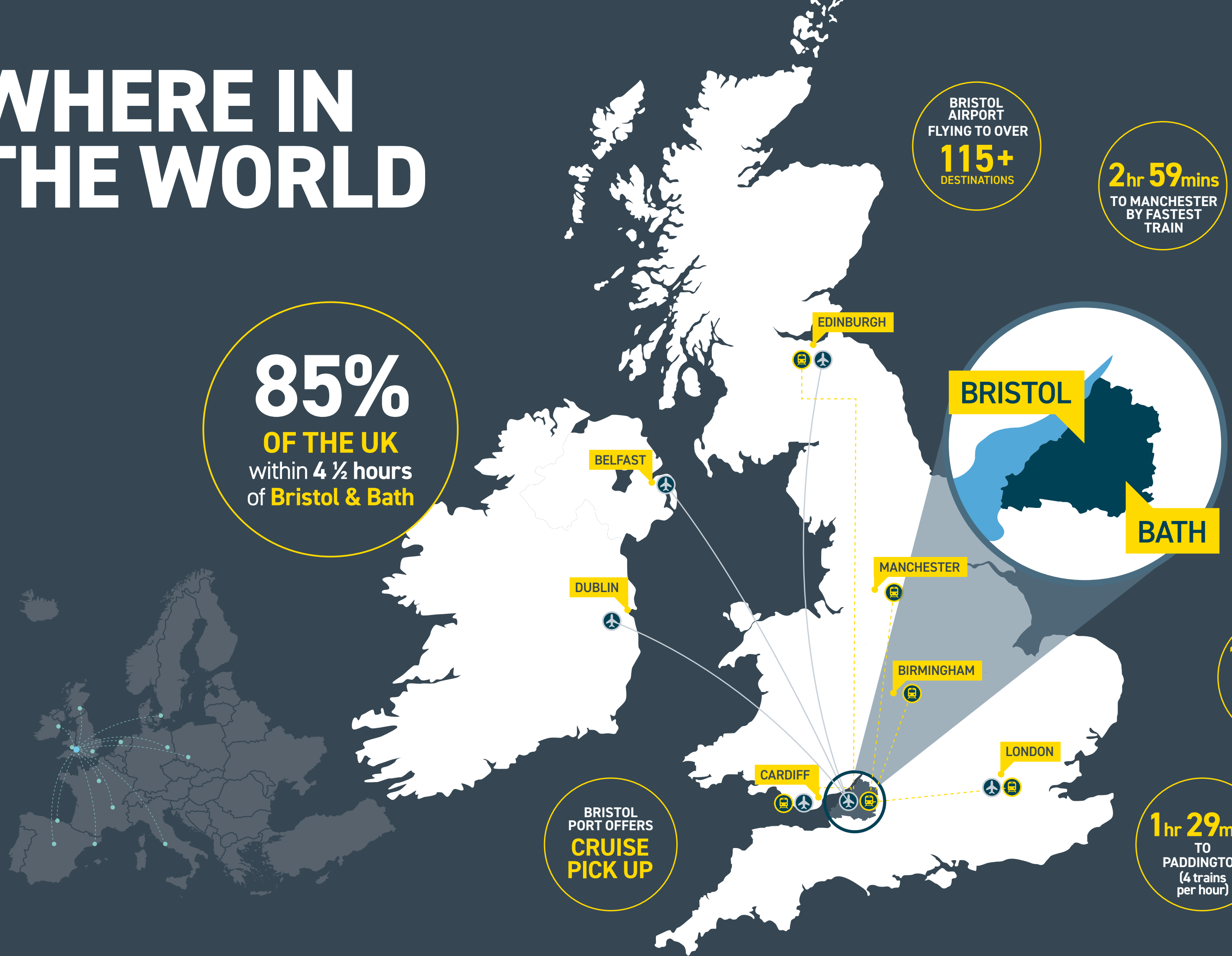
1hr 20mins
TO BIRMINGHAM
BY FASTEST
TRAIN

1hr 26mins
TO OXFORD
BY TRAIN

1hr 45mins
TO HEATHROW
AIRPORT FROM
BRISTOL
BY CAR

1hr 29mins
TO
PADDINGTON
(4 trains
per hour)

BRISTOL PORT OFFERS
**CRUISE
PICK UP**



QUALITY OF LIFE

CURIOUS FOR CULTURE

Offering everything from international music festivals, cutting-edge theatre, and culinary expertise from around the world, it's impossible to be idle in the West of England.

QUALITY OF LIFE

Step on board the last Concorde at

AEROSPACE BRISTOL



Experience life on the world's first great ocean liner,

BRUNEL'S SS GREAT BRITAIN



Nothing captures the region's spirit better than its **NUMEROUS FESTIVALS**, celebrating everything from jazz and blues, film and animation, literature, food, and folk. Enjoy family fun at the **HARBOUR FESTIVAL** an extravaganza of dance, music, arts, food markets, and visiting vessels.



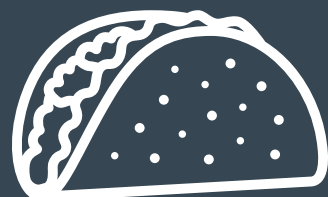
Bath is the UK's

MOST FAMILY-FRIENDLY CITY



Source: MoneySuperMarket

STREET FOOD POP-UPS



Explore the World Vegan Capital, as designated by foodie blog the

CHEF'S PENCIL



Watch amateur and professional riders competing together in what is easily the toughest sand track anywhere in the world, the **RHL WESTON BEACH RACE** – the UK's largest off-road motorsport event.



Discover Renaissance treasures and masterpieces by Gainsborough at the

HOLBURNE MUSEUM



HISTORIC THEATRES

Bristol Old Vic is the longest continually running theatre in the English-speaking world.

Built on its current site in 1805, the Theatre Royal Bath is one of the oldest working theatres in the country.



Explore one of the best-preserved Roman remains in the world at the **ROMAN BATHS**

QUALITY OF LIFE

BRISTOL BEACON



Share the unity and joy of live music. A music charity, renowned international concert venue, and award-winning music education hub.

THE WAVE



England's first inland surf lake in South Gloucestershire has hosted the Surfing England Adaptive Open Surf Championships twice.



'WHIRLIGIG'

Super Culture's award-winning outdoor arts and circus festival is held in late summer across the seafront in Weston-super-Mare with its trademark line-up of extraordinary and eclectic acts.

BRISTOL IS A GOLD SUSTAINABLE FOOD CITY



BATH HALF

One of the UK's oldest and most popular half marathons.



A wide range of **GALLERIES & MUSEUMS** bring our region's creativity and history to life, alongside **THEATRE AND COMEDY** with West End productions, ballets, and comedy regularly visiting the Bristol Old Vic and Bristol Hippodrome. More experimental works come courtesy of Old Market Assembly, the Arnolfini centre, Clevedon Theatre Shop, Front Room WSM, and Komedia in Bath.



With over 20 breweries, award-winning distilleries, vineyards, and, of course, cider makers, our region is a paradise for beverage enthusiasts.



Motion is recognised as one of the best clubs in the world, regularly appearing in top lists by industry experts.

Watch over 100 hot air balloons take off at dawn and dusk for Europe's largest annual meeting of hot air balloons.

BRISTOL INTERNATIONAL BALLOON FIESTA



PARAORCHESTRA

Experience the world's only large-scale virtuoso ensemble of professional disabled and non-disabled musicians.

QUALITY OF LIFE

AN INCLUSIVE REGION

Diversity and inclusivity are at the heart of our region, enriching and enhancing our cities and towns. We're home to 91 languages, 45 different religions and across our population there are over 180 countries of origin.

BATH IS THE UK'S MOST PROGRESSIVE CITY WITH BRISTOL #2

Trends measured include: gender pay gap, recycling rates, voter turnout, number of vegan and vegetarian restaurants, number of ultra-low emission vehicles, and number of women in local government (The Bankrate UK Progressive Cities Index 2020).

Here in the **West of England**, we inspire diverse entrepreneurs and change makers. Some of the UK's pioneering disability and diverse led companies and organisations are based here including Extraordinary Bodies, Blak Wave, Gritty Talent and BeonBoard.

INTERNATIONAL CUISINE

Food festivals and street food stalls are abundant across the region. At St Nicholas market in Bristol, you'll find anything from Caribbean to Moroccan to Japanese food stalls, East African cafes in St Pauls, and international chefs presenting at annual food festivals in Bath.

CELEBRATE COMMUNITIES

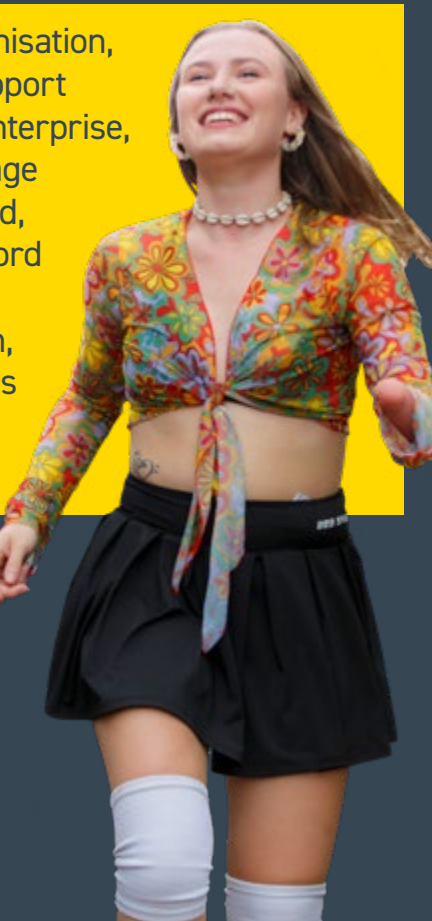
Bristol is home to St Paul's Carnival, a celebration of Afro Caribbean culture which welcomes audiences of over 70,000. The city also hosts a range of other festivals, including the Bristol Harbourside Festival, Bristol Refugee Festival, and the Festival of Ideas. Throughout the region, a diverse array of venues offer a wide spectrum of entertainment and performances. From South Asian music and dance to West African Blues at Bristol Beacon, international



Bhagesh Sachanir Photography

films at the arts cinema Watershed, and orchestral performances featuring professional disabled musicians in the Paraorchestra, there's something for everyone to enjoy.

WECIL, an award-winning user-led organisation, works tirelessly across the region to support disabled individuals. 91 Ways, a social enterprise, actively engages with Bristol's 91 language communities, uniting people through food, events, and special projects. Off the Record is a charitable organization dedicated to supporting young people's mental health, and in Weston, The Other Place serves as a social space and skills hub catering to the town's global majority communities.



Paul Blakemore

Paul Blakemore

SHOWCASING CULTURE

The Museum of East Asian Art in Bath offers a platform to showcase the work and collections of diverse artists. In Weston-super-Mare, four bandstands host a variety of global music performances, featuring artists from Malawi, France, Iran, Turkey, Brazil, and the UK. The GLOW festival brings together professional light artists and local communities, including Weston Pride, refugees, asylum seekers, and recovery groups, to illuminate and celebrate all the people who contribute to Weston's authentic shine.



Paul Blakemore

SUPPORT

The region fosters a sense of community through a multitude of social groups, forums, events, and community organisations that bring people together for support and shared experiences. Diverse Doors Open Day, organised by the Bristol Multi-faith Forum, opens places of worship to help discover and learn about the many faith communities across the region.



FULL OF PRIDE

The region takes great honour in hosting annual Pride events in Bath, Weston, and Bristol, attracting over 60,000 visitors to its vibrant Pride Day and Parade celebrations. There's a thriving scene with regular drag king and queen cabaret nights, the Queer Vision Film Festival, and events featuring live performances and DJs catering to women and non-binary individuals.

Venues across Bristol showcase black drag performers at Black Excellence Cabaret evenings, while many of the region's nightclubs host regular events for LGBTQIA+ party goers. In Weston why not pop-into Pride Bar and join the 'Let's Get Visible' craft collective or take a walking tour of the Queer Tales of Weston-super-Mare, co-created with local voices, to explore the city's LGBTQ+ heritage.



Julian Preece Photography & W.E. Irish CIC

CLEAN + GREEN

Sustainability is at the heart of all activities in the West of England. The Combined and Unitary Authorities declared climate emergencies, pledging actions to support nature recovery, and setting a 2030 ambition for net zero, 20 years ahead of the UK target.



Freia Turfand

ENVIRONMENT



Visit Bath

ACORN

is a pioneering carbon offsetting forest near Bath, the first in the UK.



THE WEST OF ENGLAND IS RANKED 5TH

of all UK Combined Authority areas for progress on climate emergencies, with Bath and Bristol ranked 7th and 10th of all UK Local Authorities

(Climate Emergency UK, 2023)



Bristol City Leap is an innovative partnership between Bristol City Council and Ameresco Ltd. investing nearly £500m into low carbon energy infrastructure, with the West of England housing the country's largest onshore wind turbine, and water source heat pumps.

Our region aims to be CARBON NEUTRAL BY 2030

20 years ahead of the UK target.



Bristol, often dubbed "GREEN HOLLYWOOD"

plays a prominent role in producing nature programming worldwide, with 35% created here, including Blue Planet and Tiny World.



Tier

6,250



people working in Low Carbon jobs in the West of England

GREEN SPACES

Explore **ROYAL VICTORIA PARK** in Bath, boasting tennis courts, a golf course, and a sprawling 9-acre botanical garden.

Bristol has over **450** beautiful parks and green spaces – proportionately more than any other UK city.



Carbon emissions have reduced

48%

since 2005 with the West of England emitting 18% less CO₂ per person than the national average in 2020.

BATH CITY FARM AND WINDMILL HILL CITY FARM

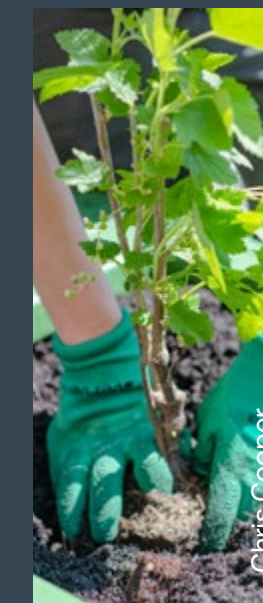
are dedicated to education, environmental conservation, and assisting individuals with health and social care needs. Spanning 37 acres, these farms offer a blend of parklands, animals, scenic walking trails, a shop, and a café.

Bath Spa University and University of Bristol are in the **TOP 20 OF ALL UK UNIVERSITY SUSTAINABILITY RANKINGS**

(People & Planet University League)

Bristol is one of the UK's **LEADING CITIES FOR SUSTAINABLE DEVELOPMENT**

and home to prominent environmental and ethical organisations such as the Soil Association, Triodos Bank and Sustrans.



Chris Cooper

Bristol and Bath are recognised as leading

FAIRTRADE CITIES

in the UK, home to inspiring initiatives such as community food growing movement, Incredible Edible.



Chris Cooper

BUZZY CITIES AND BLUE SKIES

THERE'S A LITTLE SOMETHING FOR EVERYONE

City or village? Countryside or coast?
Suburban or central? Few regions offer
such a wide choice of where to live, all
within an easy commute to work.

SPOTLIGHT ON BATH

The UK's most **PROGRESSIVE CITY** offers an unbeatable lifestyle that seamlessly blends cultural and sporting excellence with breath-taking architecture, vibrant markets, eclectic bars, and diverse eateries. All of this set against the backdrop of a remarkable countryside setting.



Roman Baths

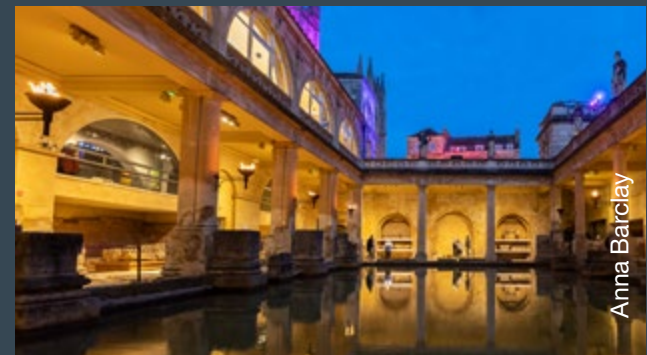
MUSEUMS AND GALLERIES

Bath has more museums per square mile than many cities can boast altogether, including Sally Lunn's Historic Eating House & Museum, The Herschel Museum of Astronomy and The American Museum (Visit Britain). You can also marvel at Bath's classical architecture by paying a visit to Bath Abbey or taking a tour of Pulteney Bridge.

Bath & North East Somerset



UNESCO WORLD HERITAGE STATUS



Anna Barclay

Marvel at the best-preserved Roman Bath Spa from the ancient world. Or for a more immersive experience, don't miss the opportunity to take a dip in **Britain's only natural thermal spa.**

Home to Bath Abbey and the prestigious Royal Crescent, a historic architectural masterpiece that has graced the screen in productions such as **"The Duchess"** and **"Bridgerton,"** making it a sought-after filming location.



FESTIVALS & THEATRE



Bath Carnival

Every year Bath Carnival transforms the streets throughout the city centre with sound systems, drummers, professional carnival dancers, schools, and community groups. The Bath Fringe is a festival of all the arts, encompassing theatre, dance, comedy, children's events, and music, unfolding over a lively 17-day period in the summer. The Theatre Royal Bath, standing on its current site since 1805, is one of the oldest working theatres in the country, a testament to the city's enduring cultural heritage.

BEST PLACE TO RAISE A FAMILY

Number one choice for Londoners looking to relocate.

(Invest in Bath, Family Living Index)

Paul Blakemore



ACTIVITIES, ADVENTURE & SPORTS



Patrick Kinachte / Onside Images

Take a ride along the Two Tunnels Greenway, featuring the longest cycle tunnel in Britain, or walk along Bath's Skyline and discover hidden valleys, flower meadows and ancient beech woodland.

Enthusiastic sports fans can cheer on Bath Rugby at the Rec or spend a delightful day at Bath Racecourse.

The city is brimming with activities and achievements. Athletes from the University of Bath achieved remarkable success at the Tokyo 2020 Olympics, securing a total of 21 medals, with an impressive 11 Gold medals.



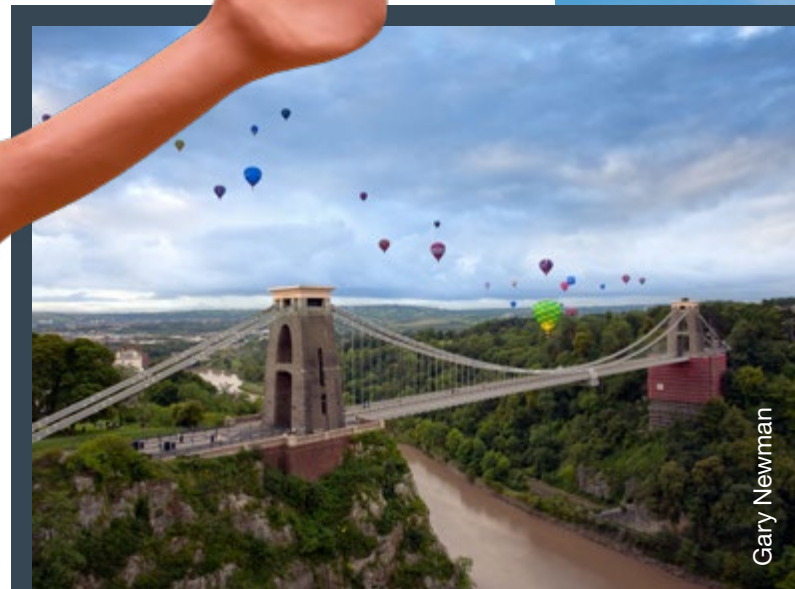
Unexpected Bath

Bath & North East Somerset

SPOTLIGHT ON

BRISTOL

Bristol, while bustling with a wide range of activities and events, manages to maintain a warm, welcoming, and accessible atmosphere, making it a broad and diverse city with a personal touch. Bristol was named as one of the 10 happiest cities to work in the UK by The Guardian.



Gary Newman

CLIFTON SUSPENSION BRIDGE

As an iconic landmark in the region, it holds a special place in history, having hosted the world's first bungee jump in 1979.

VOTED COOLEST CITY

by Rough Guides UK



Bhagesh Sachania Photography

Home to the highest concentration of DJs and artists in Britain, Bristol is famous for its numerous festivals, carnivals, live music performances at its own amphitheatre, and its vast variety of nightlife.

And for art enthusiasts, don't miss the opportunity to participate in one of Europe's largest street art and graffiti festivals, Upfest.

Bristol proudly holds the title of the world's largest manufacturer of hot air balloons, hosting an annual festival to celebrate this achievement.

The River Avon winds its way through Bristol creating a beautiful harbourside area to explore. Enjoy ferry rides, paddle boarding and scenic cycle routes that offer picturesque views of the river. It is also home to Bristol's number one tourist attraction, Brunel's SS Great Britain.



SS Great Britain

UNESCO CITY OF FILM



Mammoth Screen & BBC

This permanent global status recognises the city's achievements as a world leader in film and the moving image. Bristol proudly houses the renowned Bottleyard Studios, Aardman Animations, and a wealth of creative talent responsible for producing acclaimed series such as Poldark, The Outlaws, Sherlock, and Broadchurch.

It is also home to BRISTOL BEACON, renowned international concert venue showcasing everything from classical and orchestra to comedy, concerts and DJs.

ASHTON GATE STADIUM

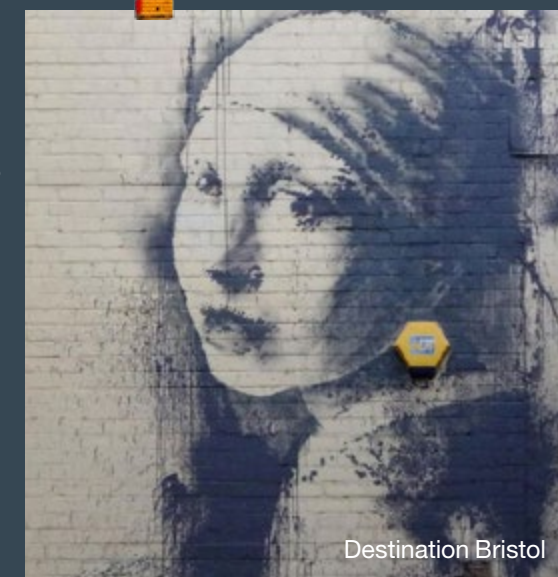
Home of Bristol City F.C. and Bristol Bears rugby club, with a 27,000 capacity for regular sports fixtures, and 32,000 for concerts featuring artists such as the Arctic Monkeys and The Killers.

UK'S FIRST CYCLING CITY



Tier

Explore the birthplace of the world-renowned street artist Banksy, whose captivating works have left an indelible mark on the art world. Delve into the world of animated icons Wallace & Gromit, beloved characters that originated in this city.



Destination Bristol

SPOTLIGHT ON

NORTH SOMERSET

If you're drawn to beachside living with convenient access to both Bristol and Bath, consider exploring Weston-super-Mare, Clevedon, and Portishead in North Somerset. These charming locales offer a peaceful atmosphere, scenic waterside walks, a wealth of cafes, restaurants, and pubs, and opportunities for windsurfing and enjoying family-friendly beaches. It's the perfect blend of tranquillity and coastal leisure.

OPEN AIR POOL

Sitting right on Portishead seafront is a picturesque outdoor swimming pool welcoming the public since 1962. Nearby you'll find Portishead Marina, one of the best-equipped marinas in the South West.



PIERS & MARINE LAKES

Take a walk along England's only intact Grade 1 listed pier, or dive into the marine lake for a swim. Clevedon is a beautiful spot in every season. For a serene and scenic experience, stroll along Poets Walk, a path named in honour of esteemed poets Alfred

Tennyson and Samuel Taylor Coleridge. Weston-super-Mare also boasts its own marine lake, while further down the coast sits its Grand Pier, making it an ideal destination for non-stop indoor family fun, with rides and attractions.



STAY CONNECTED

The proximity of Bristol and Bath is a great advantage, with both cities just a short 30-minute journey away. North Somerset is home to Bristol Airport, offering convenient access to a wide range of business and leisure destinations, making it an excellent travel hub for residents in the area.



FAMILY FUN



Looking for non-stop family fun? Head to the **GRAND PIER** at Weston-super-Mare or Mendip Activity Centre for thrilling rides and attractions. If it's history you're after, the Helicopter Museum in Weston houses the world's largest dedicated helicopter collection, with over 100 exhibits on display.

For those interested in wildlife, explore Puxton Park, Noah's Ark Farm, Yeo Valley Gardens or the beautiful Tyntesfield Gardens, each offering their own unique charm and natural attractions.

HIKE, BIKE AND EXPLORE

Ashton Court Estate boasts 800 acres of woodland open to the public and dogs and home to fallow deer, mountain bikers and golfers. Uphill Nature Reserve, Goblin Combe and the Strawberry Line are just a few of the many other local nature spots to explore. Brean Down, just 2 miles down the coast from Weston-super-Mare is one of the longest stretches of sandy beach in Europe boasting 7 miles of beach and dunes, providing ample space for relaxation and enjoyment by the sea.



SPOTLIGHT ON

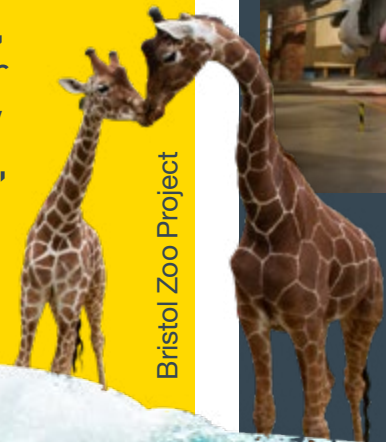
SOUTH GLOUCESTERSHIRE



South Gloucestershire is a diverse region encompassing Thornbury, Filton, Winterbourne, and Yate. It's rich with market towns, historic architecture, and sprawling countryside. Ideally placed close to Bath, Bristol, and the Cotswolds, it provides the perfect blend of both rural and urban living.

FAMILY FUN

South Gloucestershire offers over 50 acres of family entertainment, adventure, and wildlife experiences spread across the **BRISTOL ZOO PROJECT**, **DYRHAM PARK** and **OLD DOWN COUNTRY PARK**. Say hello to bears, giraffes, zebras, or alpacas, and enjoy the walled garden, adventure park, and zip wire.



Bristol Zoo Project

CONCORDE

Pay a visit to Aerospace Bristol and step aboard the last Concorde to take flight, right in its birthplace of Filton.

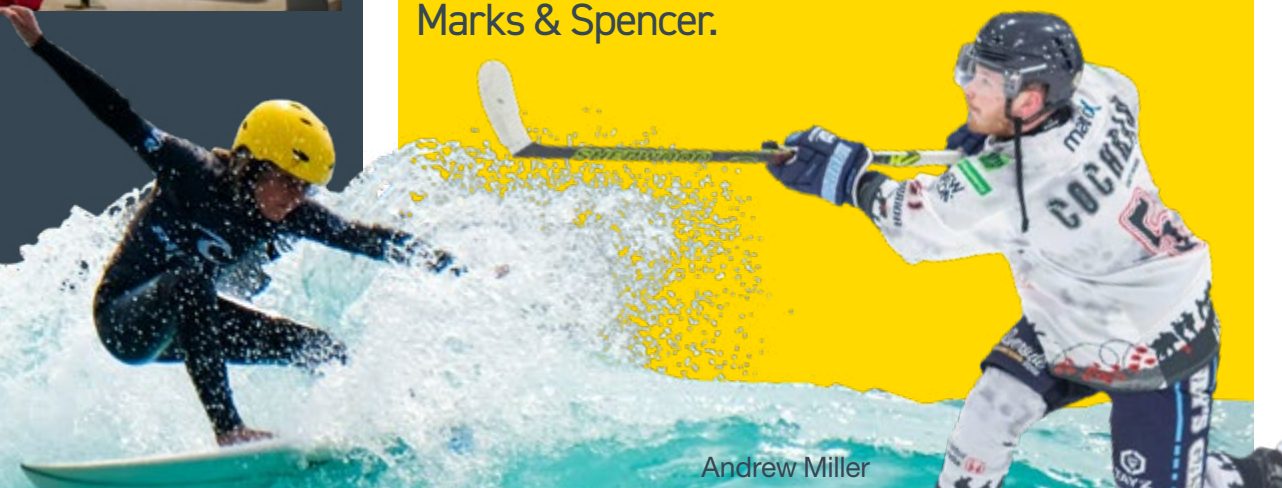


Aerospace Bristol

SURF, SKATE AND SPRING

Surf all year round at **THE WAVE**, the first inland surfing venue in the northern hemisphere, providing over 1000 waves an hour. It's a fantastic destination for surf enthusiasts looking to catch a wave at any time of the year. For ice sports enthusiasts, make your way to **PLANET ICE** to support the Bristol Pitbulls ice hockey team at their home rink or enjoy some skating yourself. Experience the exhilaration of flying at **AIR HOP**, with over 135 interconnected trampolines.

THE MALL at Cribbs Causeway offers the ultimate indoor shopping experience. It's the largest of its kind in the South West, with over 150 stores, including John Lewis, Apple, and Marks & Spencer.



The Wave

Andrew Miller

THORNBURY CASTLE

This stunning 16th-century building, once owned by Henry VIII, stands in 15 acres of majestic beauty, complete with vineyards and a Tudor garden.



BADMINTON HORSE TRIALS

From Cross Country to Dressage, this five-day spectacular is arguably one of the most prestigious horse-riding events. The trials are a CCI***** event, a rating for the highest level of equestrian competition.



6 O'clock Gin

6 O'CLOCK GIN

Take a tour around the 6 O'clock Gin at Thornbury, perfect for those who want to see 'behind the scenes' at a working distillery.

HOW MUCH FOR A HOME?



AVERAGE HOUSE PRICES

Legend: London (White), Bristol (Yellow)

Property Type	London Price	Bristol Price
Average Semi-detached House to Buy	-	-
Average Flat to Buy	-	-
Flats to Rent PCM (2 Bed)	-	-
Flat	£595K	£279K
Terraced house	£892K	£386K
Semi-detached house	£959K	£417K

Data source: Carter Jonas, December 2023

EDUCATION

WE'RE TOP OF THE CLASS



Our region offers some of the best schools, SEND (Special Educational Needs and Disabilities) facilities, academies, colleges, and universities in the country. This rich educational landscape, coupled with strong collaborations between educational establishments and employers in Bristol and Bath, results in enhanced job prospects for college graduates and students.

Bristol became **England's first UNESCO Learning City**, joining a global network of like-minded cities championing learning as a way to transform lives, communities, and cities.

iO Academy is a 16-week, full-time full-stack coding bootcamp in Bath with a 100% graduation rate.

City of Bristol College is one of the **largest FE and HE colleges in the South West**.

Weston College is recognised as a **centre of excellence for Special Educational Needs and Disabilities (SEND)** education, and a sensory learning base for students with Profound and Complex Learning Disabilities (PCLD).

Bath Spa University is one of the greenest universities in the UK and **ranked as a top Gold Tier university** (Uswitch Green Universities Report 2022). It also secured a place in the top 20 UK institutions for Art (Guardian League Table 2020).

Boomsatsuma is fuelling the next creative generation, offering a range of college and degree courses in Creative Industries including Gaming, Postproduction, Sports Media, and VR and VFX.

 Home to **four world class universities**, ranked in the **Top 100 in the UK** - with 100,000+ under-graduate and post-graduate students studying in the region. Within an hour of this, lie a further 155,000+ students across an additional eight universities.

University of Bristol ranked #55 globally and #9 UK by QS World University Rankings 2023. A new **£300m innovation and enterprise campus** is being developed by the university.



25  **INDEPENDENT SCHOOLS**

University of the West of England ranked joint second in England for student satisfaction (National Student Survey 2020), with 91% of graduates finding employment or further study after 15 months (Graduate Outcomes Survey). UWE Bristol excels in research, with around 76% of its research being categorized as 'internationally excellent' or 'world-leading'.



23  **SEND SCHOOLS**

University of Bath named '**University of the Year**' (The Times and Sunday Times Good University Guide 2023) and scored an impressive 91% for graduate prospects (University League Tables 2024).

£3m of apprenticeship levy pledged under the Share to Support Apprenticeship Levy service has supported over 240 apprentices and 100 businesses.

8 **ALTERNATIVE LEARNING PROVISIONS** 

325 **PRIMARY SCHOOLS** 

63 **SECONDARY SCHOOLS** 

Bath College is one of the top 10% of FE Colleges in England for employer satisfaction with achievement rates **significantly above the national average**.

The West of England Combined Authority has taken a significant step in enhancing the region's skills by **leading £6 million worth of Skills Bootcamp** delivery to employees.

TRANSPORT

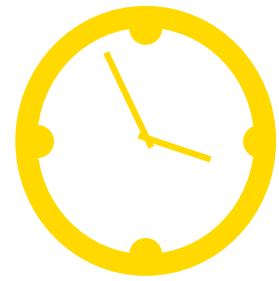
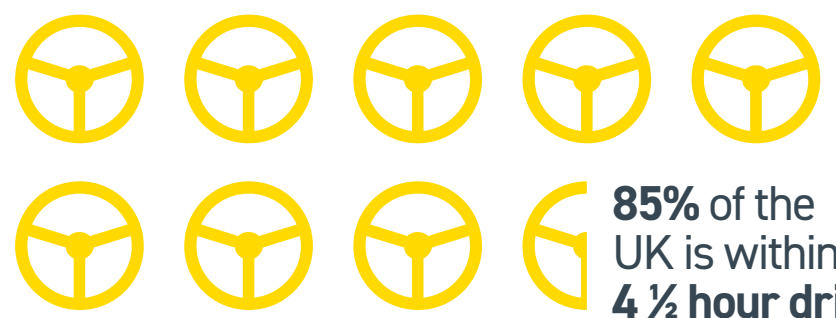
BETTER CONNECTED



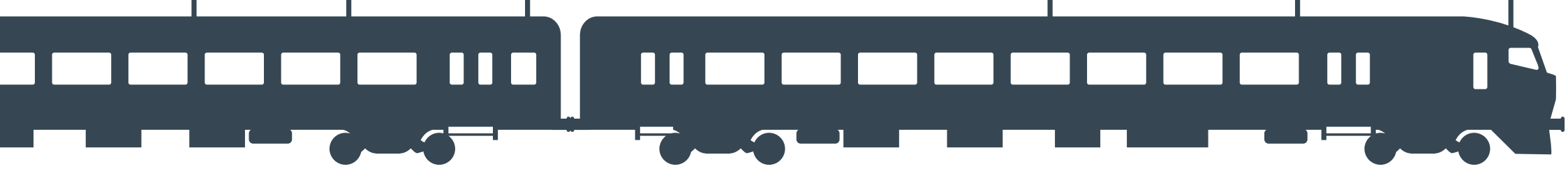
BRISTOL & BATH TO THE UK



Arrive in London Paddington in **79 mins**



Trains to the capital **4 times every hour**



GETTING AROUND BRISTOL & BATH:



The two cities are connected by:

- an 11-minute train journey
- the Bristol & Bath Railway Path, a 13 mile off road route open to both walkers and cyclists



Hop on Bristol Ferry Waterbus operates 364 days a year, sailing you around the city.



As of April 2020, First's fleet has **99 bio-methane buses** serving the area, reducing emissions by up to 85%.

ALL ABOARD

Bristol Port is home to the UK's most centrally located cruise terminal.

BRISTOL & BATH TO THE WORLD

Bristol Airport connects to 115+ destinations across UK & Ireland, Europe, and the rest of the world. You can connect to several onward destinations including Orlando and New York.

INVESTING IN CONNECTIVITY

- The West of England is investing £286 million to revolutionise the region's rail network, reopening lines and building new stations
- Bristol is the UK's first cycling city with a further £650m investment planned for walking, cycling and bus routes
- £90m is being invested to create 'Future Transport Zones', providing testing facilities for clean technologies of the future
- Electric scooters are available across the region providing an environmentally friendly and sustainable mode of transport

Heathrow Airport is just **1HR 45MINS** drive away



AN INNOVATIVE ECONOMY

BRISTOL + BATH HOME OF INNOVATION

Collaboration, creativity, and innovation is at the heart of all activity across Bristol & Bath.

We're a place where creative, digital, and high-tech meet traditional industry. It's a hotbed for entrepreneurial talent, boasting the highest survival rate for small and medium-sized enterprises in England.

The West of England is a place where highly skilled individuals come together, and ideas flourish, making it a prime destination for growth and success.



Open Bionics

AN INNOVATIVE ECONOMY

WELCOME TO A **£40BN** ECONOMY

The West of England is an economic powerhouse for the UK and is home to six business districts. A world leading talent pool with 46,000 businesses and 28,000 graduates per year.



HOME TO FIVE UNICORNS
(companies valued at over \$1bn)

Bath & North East Somerset is ranked the **best UK location for microbusiness** (Business Financed)



THE UK'S MOST PRODUCTIVE TECH CLUSTER

The West of England is home to the SETsquared Partnership, the **UK's No.1 business incubator** with a strong track record of commercial success in bringing research and innovation to market for over 20 years.



In 2021 UK Research and Innovation (UKRI) **invested £296m in businesses and universities** in the West of England.



Bristol named **third largest business hub in the UK** - with more than 55,000 companies (the Business Magazine).





The University of Bristol spinouts lead the way with the highest proportional growth between 2022 and 2023 in the UK, **currently home to 47 spinout companies** (Beauhurst).





Bristol is the **2nd most innovative city in the UK** (Paymentsense, innovation index), making it one of the top 5 regions for start-ups outside London, with 580 high growth companies (Beauhurst).


OUR KEY SECTORS


-  **AEROSPACE & ADVANCED ENGINEERING**


-  **FINANCIAL & PROFESSIONAL SERVICES**


-  **FINTECH**


-  **CREATIVE & MEDIA**

-  **DIGITAL & TECH**

-  **LIFE SCIENCES**

-  **CLEAN TECH & ENERGY**

-  **LOGISTICS & DISTRIBUTION**

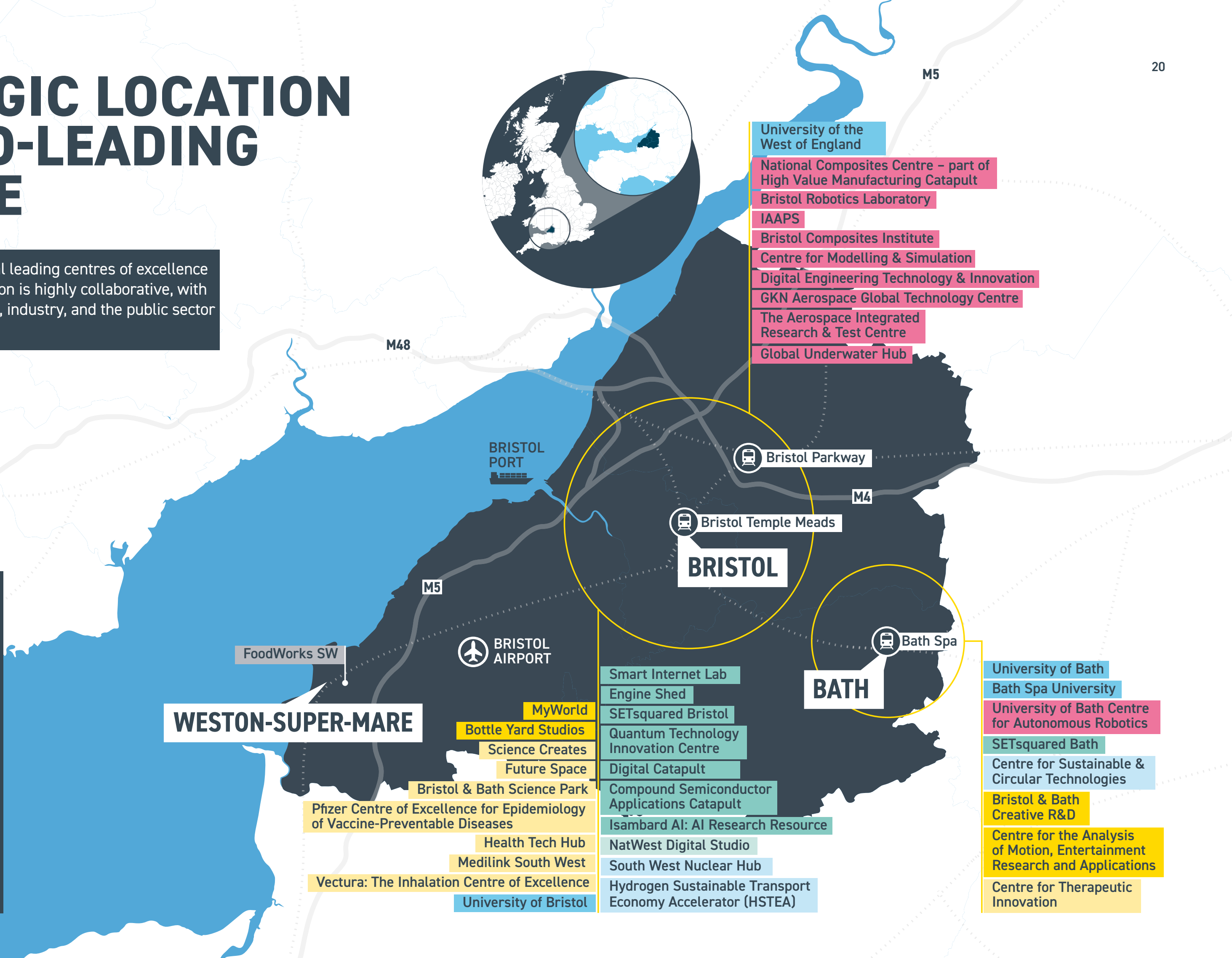
-  **FOOD & DRINK INNOVATION**

A STRATEGIC LOCATION OF WORLD-LEADING EXPERTISE

The West of England is home to global leading centres of excellence across a range of industries. Our region is highly collaborative, with research and development, academia, industry, and the public sector working together.

KEY

- Aerospace & Advanced Engineering
- Creative
- Cyber
- Digital and Tech
- Food & Drink Innovation
- FPS and FinTech
- Green Energy
- Life Sciences
- Universities



INVEST BRISTOL & BATH

A confidential and complimentary service.

Are you ready to expand your business in the West of England? Unlock access to Invest Bristol & Bath's well-connected support network for the strongest possible start, equipped with all the essentials to thrive in our dynamic and prosperous region.

-  International business
-  Talent & education
-  Property solutions
-  Sector specialists
-  Regional partners
-  Networks
-  Regional visits
-  Industry connections
-  Email: invest@bristolandbath.co.uk



Destination Bristol

BRISTOL + BATH

Bristol City Centre BID



If you are thinking of relocating to our region, we can offer a variety of client services to suit your needs. Contact us to find out how we can help you:

Invest Bristol + Bath

invest@bristolandbath.co.uk

+44 (0)117 428 6211

www.bristolandbath.co.uk



**WEST OF
ENGLAND**
Combined Authority